



## Research funding partnership

Cooperation between the SNSF and CTI



SWISS NATIONAL SCIENCE FOUNDATION



Schweizerische Eidgenossenschaft  
Confédération suisse  
Confederazione Svizzera  
Confederaziun svizra

Swiss Confederation

Federal Department of Economic Affairs FDEA  
**Federal Office for Professional Education and Technology OPET**  
Innovation Promotion Agency CTI

# Cooperation between the SNSF and CTI

Public funding of research in Switzerland is mainly conducted by two institutions:

- The *Swiss National Science Foundation (SNSF)* is Switzerland's leading institution for scientific research funding (see [www.snsf.ch](http://www.snsf.ch)). Established in 1952 as a foundation under private law, the SNSF has the autonomy it needs to promote independent scientific research. The aim is to make as much scientific progress as possible in all fields of knowledge. Around 600 million Swiss francs of federal funding are available to the SNSF annually for financing research.
- The *Innovation Promotion Agency (CTI)* is the federal government's most important institution for funding applied and market-focused research. It has supported research and development projects between companies and universities for over 60 years. The aim is to achieve maximum market impact (see [www.kti-cti.ch](http://www.kti-cti.ch)). Around 125 million Swiss francs are available to the CTI annually for funding implementation of research and expertise on the market.



The two funding institutions have different complementary *core tasks* and *purposes*:

SNSF core tasks	CTI core tasks
The SNSF funds scientific research focused on the acquisition of scientific knowledge that does not directly serve commercial purposes; it does so primarily by supporting individual projects as part of its funding of projects and individual scientists	The CTI funds applied and market-focused projects that prioritise the economic benefit and exploitation potential of innovative products and services for industry and society; Swiss universities and research institutions conduct these R&D projects in partnership with companies
The SNSF specifically supports young researchers and thus decisively contributes to securing junior academics for universities, industry and society	The CTI promotes the foundation and development of technology-based start-up companies with major growth potential
The SNSF runs the National Research Programmes (NRPs) which focus on problem-solving topics determined by the Federal Council and the structure-focused National Centres of Competence in Research (NCCRs)	The CTI promotes R&D consortiums and thus cooperation between research institutions and partners in industry. It also promotes KTT consortiums devoted to the development and implementation of knowledge and technology transfer (KTT) throughout Switzerland
<b>Purpose</b> Strengthening the Swiss research community	<b>Purpose</b> Strengthening Switzerland as an innovation centre

# Current fields and forms of cooperation

The CTI and SNSF realise their cooperation by identifying their commonalities and adjusting their strategies accordingly and defining joint campaigns and public events. The following current fields and forms of cooperation already exist:



## Reciprocal referral to the funding opportunities of the partner organisation

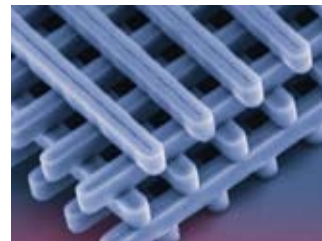
The SNSF encourages researchers to submit applications with clear exploitation potential for industry to the CTI. Similarly, the CTI refers applicants whose applications focus primarily on expanding scientific knowledge to the funding opportunities of the SNSF.

## Joint project funding at universities of applied sciences

The CTI is represented on the SNSF's expert assessment commission for DORE (DO REsearch – funding instrument for research at universities of applied sciences and of higher education for pedagogy) with the aim of ensuring continuity of project funding: the SNSF supports primarily the academic part of the project while the CTI supports primarily the applied part.

## Cooperation and/or co-funding in National Research Programmes (NRPs)

NRPs with a strong industrial or applied focus – such as the current NRP “Intelligent Materials” – can be conducted as cooperation programmes and/or co-funded by the SNF and CTI, such as the practice-oriented dissertations in material sciences in the NRP “Supramolecular functional materials”.





### **Mutual assurance of knowledge and technology transfer (KTT) from NRPs and NCCRs**

Knowledge and technology transfer (KTT) is an integral part of every National Research Programme (NRP) and National Centre of Competence in Research (NCCR). The CTI is permanently represented in the respective SNSF division responsible for decision-making processes regarding NRPs and NCCRs. This creates the basis for a KTT that may ultimately lead to the implementation of new application possibilities, or even new start-up companies.

### **International: Representation of common interests and ideas exchange**

The CTI has been involved in *Swisscore*, the SNSF's liaison office in Brussels, both in terms of content and finances, since 2007. *Swisscore* represents Swiss interests on education, research and innovation policy in the EU. In the area of European research cooperation, the SNSF and CTI are also regularly in touch regarding participation in EU schemes.



### **Joint conferences and public events**

The SNSF and CTI regularly organise a joint KTT conference between research bodies, universities and industry. The CTI is also represented at the SNSF's "Research Day" at Swiss universities.



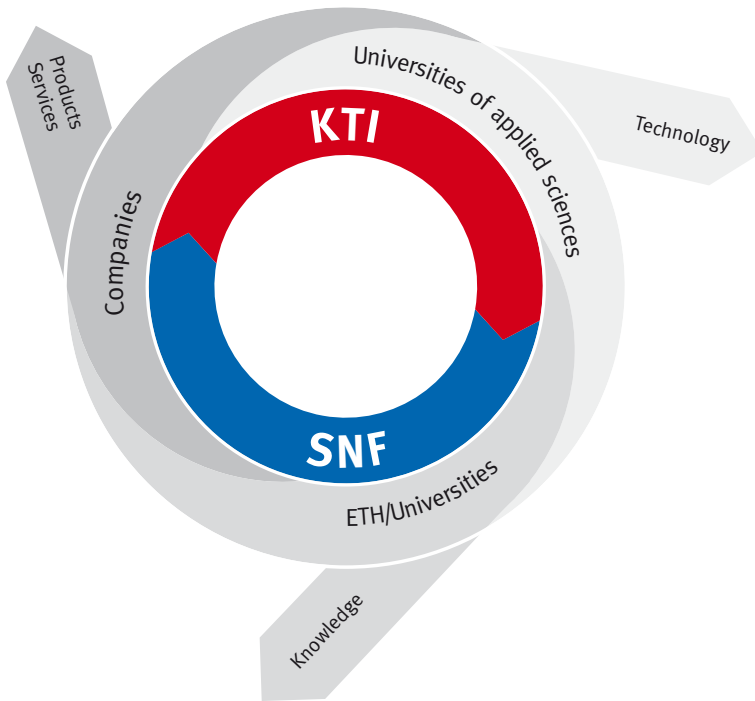
### **Joint media training for researchers**

The SNSF and CTI jointly offer media training for researchers. The latter are to be trained in dealing with (mass) media to make it easier for them to express themselves appropriately in public and present their work effectively.



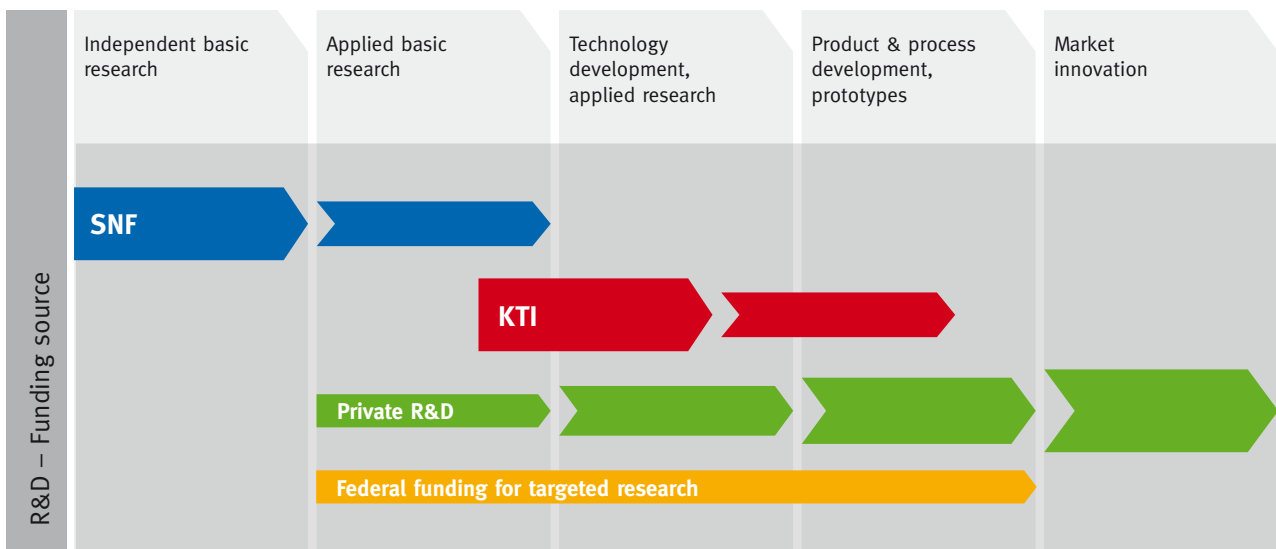
# Partners in the innovation process

The SNSF and CTI are major institutional partners and engines of the *innovation process* spawned by research in Switzerland:



# Partners in project funding

The SNSF and CTI dovetail their services in the *project funding* sector as part of their funding partnership:



## Contact

### Swiss National Science Foundation (SNSF)

Wildhainweg 3  
CH – 3001 Bern  
+41 (0)31 308 22 22  
info@snf.ch  
www.snsf.ch

### Innovation Promotion Agency (CTI)

Federal Office for Professional Education and Technology (OPET)  
Effingerstrasse 27  
CH – 3003 Bern  
+41 (0)31 322 24 40  
info@kti-cti.ch