



Schweizerische Eidgenossenschaft
Confédération suisse
Confederazione Svizzera
Confederaziun svizra



SWISS NATIONAL SCIENCE FOUNDATION

Swiss Confederation

Federal Department of Economic Affairs FDEA
Federal Office for Professional Education and Technology OPET
Innovation Promotion Agency CTI

CTI and DORE: Good research finds strong promoters

Research in fields like social work, health, music and theatre, art, education, applied psychology and applied linguistics holds great potential for society, economy and science. The Swiss National Science Foundation (SNSF) and the Innovation Promotion Agency (CTI) therefore promote good market- and application-oriented research in these areas.

CTI and SNSF function differently. But they complement one another. CTI promotes market-oriented research that aims to have an effect on the political economy. CTI's promotion is in principle open to all disciplines. About 100 million francs are available per annum as promotion resources.

SNSF supports research foremost in universities with the objective of encouraging scientific excellence. SNSF has promotion resources of about 500 million francs per annum.

SNSF and CTI have reviewed and coordinated their activities to facilitate researchers' access to funding in the areas of social work, health, music and theatre, arts, education, applied psychology, and applied linguistics. An expert commission called DORE (DO-REsearch) has been created and integrated with SNSF to support applied research in the above-mentioned areas at universities of applied sciences and universities of teacher education.

To whom should we address our applications for funding – DORE or CTI?

DORE supports four types of funding:

- Project funding (contributions normally from one to three years; applications must be submitted by March 1 and October 1),
- Funding of scientific conferences (max. 10,000 francs; applications may be submitted at any time),
- Funding of publications (max. 10,000 francs; applications may be submitted at any time),
- Funding of scientific courses for promising young researchers (max. 25,000 francs; applications may be submitted at any time).

A precondition for project promotion is the participation of a partner who will look to the practical relevance of the project and who is interested in applying the research results. This partner must bear at least 30% of the project expenses – in the form of a financial contribution and/or material or staff provision.

The applications are evaluated by external domestic and foreign experts. Then, the DORE expert commission takes a decision, giving due consideration to the experts' opinions, and submits the decision to the National Research Council for its definitive approval.

The appraisal criteria are scientific quality, state of the art, suitability of the methodology, the applicants' technical and managerial competence, and the relevance of the project in practice.

The research projects CTI supports are always executed jointly by a minimum of one implementation partner – companies, the public authorities, non-profit organisations – along with a research partner from the Swiss Federal Institute of Technology (ETH), another university, or a university of applied sciences. Applications for funding may be submitted at any time. These are evaluated by top-class scientific and economic experts. The most important selection criteria are innovative content and the effect that can be achieved in the economy and society through subsequent utilisation of the further-developed research results. It is therefore of decisive importance that the implementation partner is committed from the very beginning to investing further time and money after CTI's financing – assuming that the designated objectives were achieved – so that the research results can be made use of, for instance in the development of a product or process or the introduction of a service in the marketplace. Accordingly, the value-added chain, implementation model and corporate approach, and sustainability are taken into consideration when evaluating the application to CTI.

The financial support – normally up to 50% of the project costs – goes to the participating universities. The implementation partners finance the remaining costs, mostly their own expenditures, themselves.

Contact

Brigitte Arpagaus
Swiss National Science Foundation SNSF
DORE
Wildhainweg 3
PO Box 8232
3001 Berne
Phone: +41 (0)31 308 22 22
dore@snf.ch
www.snf.ch

Roland Bühler
Innovation Promotion Agency CTI
Federal Office for Professional Education
and Technology OPET
Effingerstrasse 27
3003 Berne
Phone: +41 (0) 31 324 71 41
info@kti-cti.ch
www.kti-cti.ch

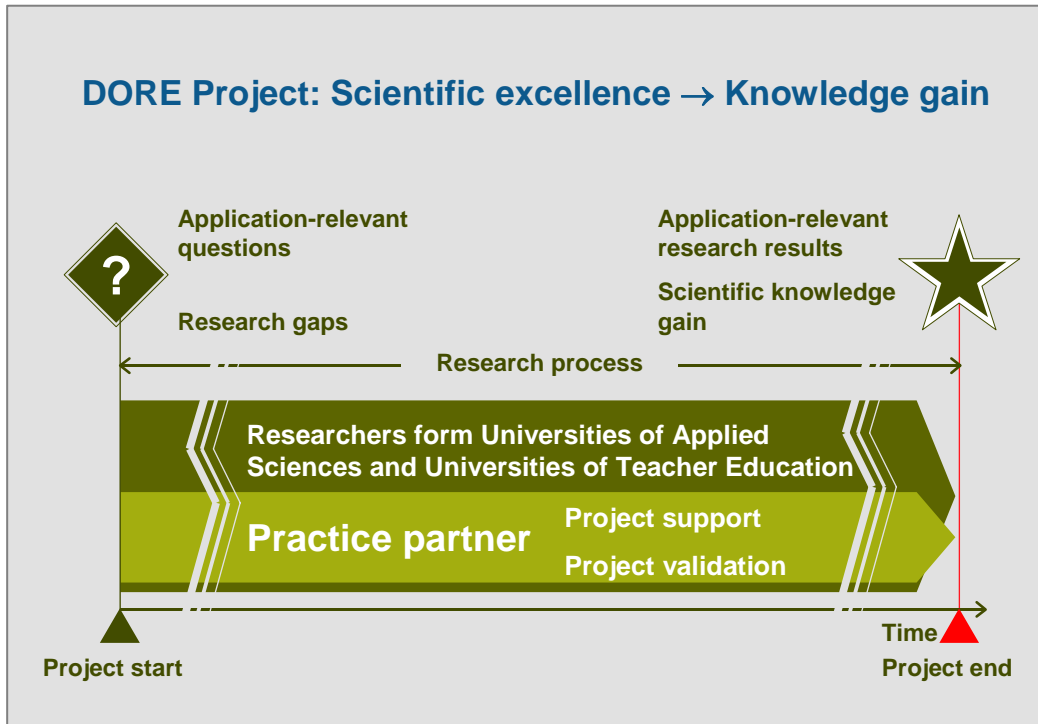
Swiss National Science Foundation SNSF

SNSF has a wide range of funding instruments that are in principle open to all scientists working in Switzerland. Through project promotion, it supports the innovative ideas of researchers of all disciplines as well as high-quality research. Moreover, SNSF promotes promising young scientists through the allocation of fellowships (funding of individual scientists). Young talent can benefit from them at any point from their doctoral work through their time as assistant professors. The SNSF conducts national research programmes that analyse current problems in Switzerland and contribute to their solutions. With the help of the national research areas, SNSF strengthens the research structures and the competitiveness of important areas. Support for scientific conferences, publications, and international collaboration are other means of promotion. www.snf.ch

Innovation Promotion Agency CTI

With the objective of encouraging more companies to use university R&D resources to develop their own innovations, CTI promotes market-oriented R&D projects that are executed jointly by companies and universities. The university partners receive the supporting funds. CTI also promotes the establishment and formation of growth-oriented companies (www.ktistartup.ch). With application-oriented education and training programmes, CTI enables an increasing number of young people to become entrepreneurs successfully (www.venturelab.ch). It is committed to a corporate-friendly environment in Switzerland. CTI participates in international research programmes that are relevant to Switzerland. Competitive companies and leading research institutes of universities should collaborate in international research developments, and they should be able to implement innovations stemming from the programmes. www.kti-cti.ch

DORE Project: Scientific excellence → Knowledge gain



CTI-Project: Investment after promotion → Implementation

