

Statistics 2015 – Full version

Table of contents

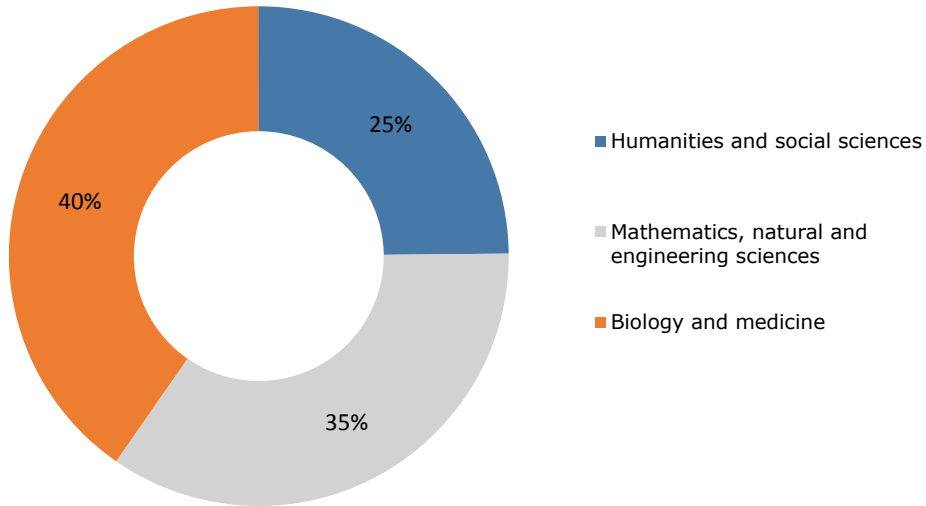
1.	Funding in overview	
1.1	Funding by research area	1
	Approved amounts since 2005	2
1.2	Funding by scheme	3
	Funding by scheme (in percent)	4
1.3	Funding by institution and research area	5
1.3.1	Funding by institution since 2005	6
1.4	Use of approved amounts	7
1.5	Personnel in research projects	8
1.6	Success rates	9
	Submitted applications by gender	10
2.	Projects	
2.1	Funding by research area	11
2.1.1	Funding by group of disciplines and gender	12
2.1.2	Funding by group of disciplines and institution	13
2.2	Funding by group of disciplines	14
2.3	Grants, reductions and rejections	17
2.4	Number of applications and grants since 2005	18
2.5	Requested and approved amounts since 2005	19
2.6	International collaborations	20
3.	Careers	
3.1	Funding by funding scheme	21
3.1.1	Funding by scheme and research area	22
3.1.2	Funding by scheme and institution	23
3.2	Funding by research area	24
4.	Programmes	
4.1	Funding by scheme	25
4.2	National Research Programmes (NRP)	26
4.2.1	Research contributions by research area and institution	27
4.3	National Centres of Competences in Research (NCCR)	28
4.3.1	Research contributions by research area and institution	29
5.	Infrastructures	
5.1	Funding by scheme	30
5.2	Funding by research area	31
6.	Science communication	
6.1	Funding by scheme	32
6.2	Funding by research area	33

1. Overview of funding

1.1 Funding by research area

Amounts in CHF million

Distribution of the approved amounts



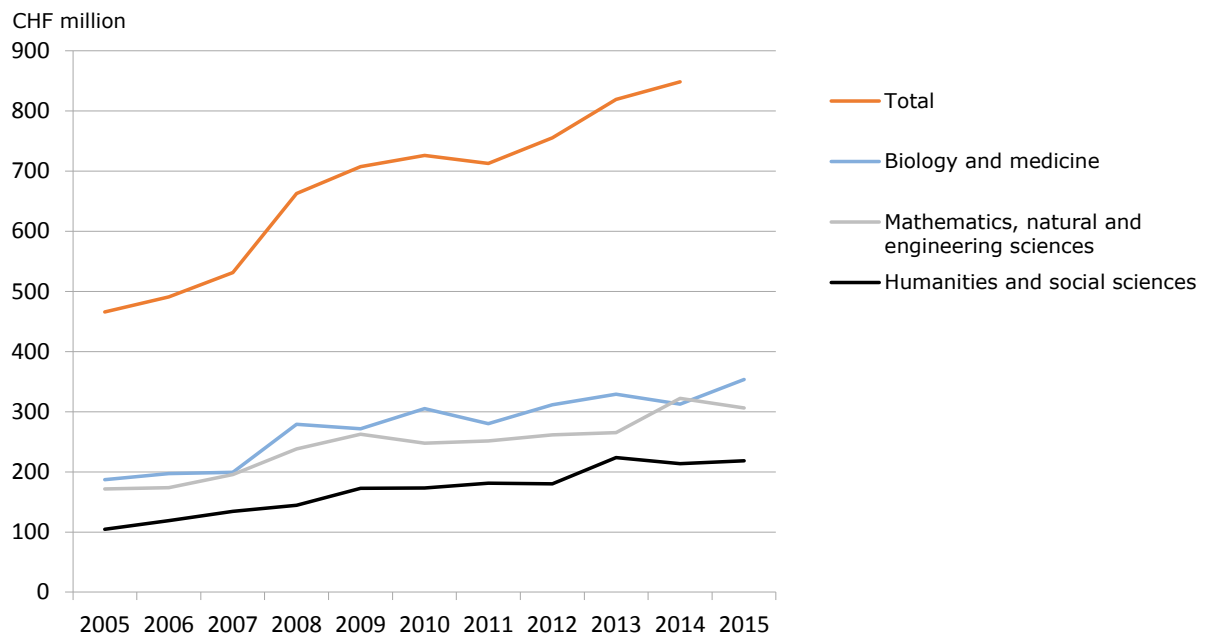
	Amount	Women	Men
Humanities and social sciences	218.2	36%	64%
Mathematics, natural and engineering sciences	306.0	15%	85%
Biology and medicine	353.3	23%	77%
Unapportionable	0.2		
Total	877.7	24%	76%

Funding was distributed slightly differently across the science areas compared to the previous year. A shift was registered in biology and medicine (+3%) and in mathematics, natural and engineering sciences (-3%).

The statistics 1.1 and 1.3 are available in interactive and extended form:

[LINK](#)

Approved amounts since 2005

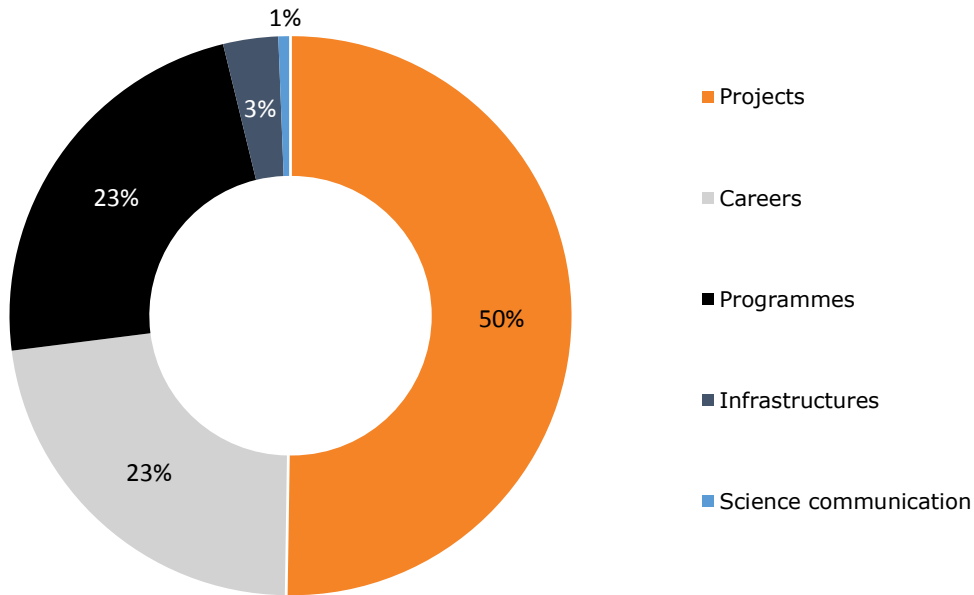


The distribution of funds across the three research areas is based largely on demand.

1.2 Funding by scheme

Amounts in CHF million

Distribution of the approved amounts



	Number	Amount
Projects	1,117	441.4
Careers	1,149	199.0
Programmes	535	203.8
Infrastructures	74	27.9
Science communication	398	5.4
Total	3,273	877.7

In 2015, the SNSF allocated half of its total budget to its main funding scheme, project funding.

Funding by scheme (in percent)

	Percent	Approved amount	
		Women	Men
Projects	50%	21%	79%
Careers	23%	40%	60%
Programmes	23%	15%	85%
Infrastructures	3%	10%	90%
Science communication	1%	37%	63%
Total	100%	24%	76%

1.3 Funding by institution and research area

Amounts in CHF million

Distribution of the approved amounts (incl. overhead)¹

Institution	Humanities and social sciences	Mathem., natural and engineering sciences	Biology and medicine	Unassignable	Total in CHF million	Total in %	Overhead	Total incl. overhead
Universities	154.5	123.5	260.8	-	538.8	61%	59.5	598.3
Basel (BS)	19.4	13.7	52.1	-	85.2	10%	7.3	92.6
Berne (BE)	18.2	28.4	38.5	-	85.1	10%	10.5	95.6
Fribourg (FR)	9.3	8.1	5.1	-	22.6	3%	5.3	27.8
Geneva (GE)	26.2	37.0	46.2	-	109.3	12%	10.6	119.9
Lucerne (LU)	2.1	-	-	-	2.1	0%	0.9	3.1
Lausanne (Uni LS)	18.2	8.0	51.3	-	77.5	9%	8.2	85.7
Neuchâtel (NE)	12.3	4.0	5.0	-	21.2	2%	1.6	22.8
St. Gallen (SG)	2.1	0.3	-	-	2.4	0%	0.2	2.6
Ticino (TI)	5.2	2.2	0.5	-	7.9	1%	1.4	9.3
Zurich (Uni ZH)	41.5	21.9	62.1	-	125.5	14%	13.4	138.9
ETH Domain	11.9	151.9	50.8	-	214.7	24%	28.5	243.2
EPF Lausanne (ETH LS)	1.7	55.5	19.6	-	76.8	9%	9.3	86.1
ETH Zurich (ETH ZH)	9.8	75.1	27.0	-	112.0	13%	14.9	126.9
Research institutes ²	0.4	21.3	4.2	-	25.9	3%	4.3	30.2
Universities of applied sciences³	20.7	4.9	1.4	-	27.0	3%	3.5	30.6
Zürcher Fachhochschule (ZFH)	5.6	1.0	0.3	-	6.9	1%	1.1	8.0
Bern University of Applied Sciences (BFH)	3.8	0.0	0.3	-	4.1	0%	0.5	4.6
University of Applied Sciences and Arts Northwestern Switzerland (FHNW)	4.8	1.1	0.8	-	6.7	1%	0.5	7.3
University of Applied Sciences Eastern Switzerland (FHO)	0.0	0.0	-	-	0.1	0%	0.3	0.3
University of Applied Sciences Western Switzerland (HES-SO)	3.5	1.1	-	-	4.6	1%	0.6	5.2
Lucerne University of Applied Sciences and Arts (HSLU)	1.5	-	-	-	1.5	0%	0.3	1.8
University of Applied Sciences and Arts of Southern Switzerland (SUPSI)	1.0	1.5	-	-	2.6	0%	0.2	2.8
Kalaisdos University of Applied Sciences (FHKD)	0.6	-	0.0	-	0.6	0%	-	0.6
Universities of teacher education⁴	1.7	-	-	-	1.7	0%	0.3	2.0
Hospitals (independent of higher education institutions)	0.4	0.0	3.6	-	4.0	0%	0.1	4.1
Other research institutes⁵	6.6	4.6	12.9	0.1	24.2	3%	2.4	26.6
Others⁶	22.4	21.0	23.8	0.1	67.3	8%	0.8	0.8
Total	218.2	306.0	353.3	0.2	877.7	100%	95.1	972.8

¹If no application was submitted by the respective institution, this is denoted by a dash. Amounts lower than CHF 0.05 million are shown as zero

²Research institutes in the ETH Domain (EMPA, EAWAG, PSI, WSL)

³BFH, FHNW, FHO, HES-SO, HSLU, SUPSI, ZFH, Kalaidos. You will find the breakdown by institution in the web version

⁴Without universities of teacher education of FHNW and ZFH

⁵SIAF, AORI, BITG, EHB, Agroscope, FiBL, IRO, FMI, IDIAP, IHEID, IST, IUKB, PMOD, FORS, SPF, SIK-ISEA, CSEM, SIB and other research institutes

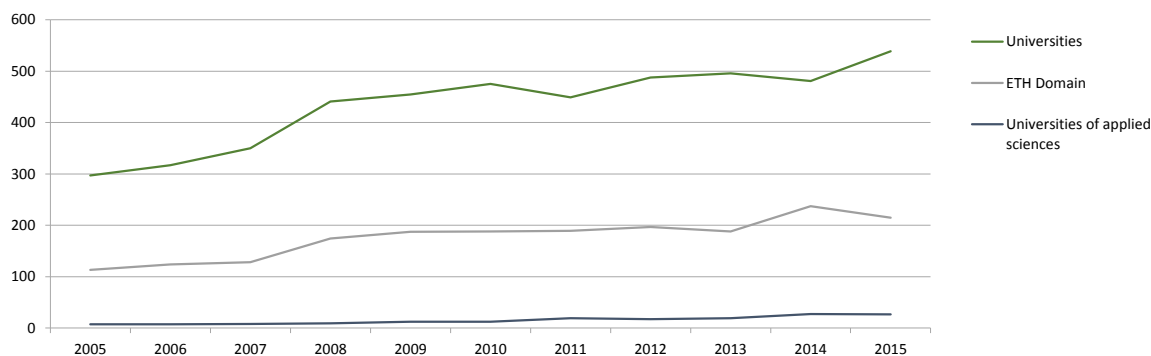
⁶Museums, libraries, companies, non-profit organisations and not assignable to an institution (e.g. Doc.Mobility, Early/Advanced Postdoc.Mobility)

The statistics 1.1 and 1.3 are available in interactive and extended form:
[LINK](#)

1.3.1 Funding by institution since 2005

Amounts in CHF million

Distribution of the approved amounts (incl. overhead)¹



	2005	2006	2007	2008	2009	2010	2011	2012	2013	2014	2015
Universities	297.3	317.0	349.8	440.9	454.8	475.1	448.9	487.8	496.0	480.8	538.8
Berne (BE)	44.6	45.3	54.3	70.9	66.3	67.9	87.5	66.1	87.2	91.8	85.1
Basel (BS)	48.4	53.3	59.2	64.2	83.1	70.7	65.9	70.7	76.6	60.7	85.2
Fribourg (FR)	17.3	16.0	20.2	21.3	25.8	31.1	24.0	25.2	23.9	41.5	22.6
Geneva (GE)	59.1	59.8	67.7	84.5	94.0	98.5	78.8	104.9	86.8	88.2	109.3
Lucerne (LU)	0.4	3.7	2.5	1.3	4.3	3.8	4.6	3.6	2.4	7.0	2.1
Lausanne (LS)	43.8	38.6	39.1	74.7	54.5	68.5	56.0	69.6	71.6	62.3	77.5
Neuchâtel (NE)	21.0	20.1	21.1	18.4	18.4	12.0	12.7	18.9	12.4	15.1	21.2
St. Gallen (SG)	5.2	2.9	4.0	4.3	5.5	4.5	6.1	7.1	2.4	2.0	2.4
Ticino (TI)	2.8	4.3	5.2	5.2	5.7	9.0	8.0	5.5	6.5	10.6	7.9
Zurich (ZH)	54.7	73.0	76.5	96.1	97.2	109.1	105.3	116.2	126.1	101.8	125.5
ETH Domain	113.3	124.2	128.3	174.6	187.2	188.3	189.5	196.9	188.2	237.0	214.7
EPF Lausanne (LS)	36.9	47.7	48.9	73.9	64.1	71.2	72.2	71.2	73.6	75.0	76.8
ETH Zurich (ZH)	65.5	69.6	69.7	82.9	98.8	94.0	93.3	101.3	92.7	126.8	112.0
Research institutes ²	10.9	6.9	9.7	17.8	24.3	23.1	24.0	24.4	21.9	35.2	25.9
Universities of applied sciences	7.6	7.2	8.1	9.0	12.4	12.2	19.4	17.5	19.4	27.3	27.0
Zürcher Fachhochschule (ZFH)	1.6	2.0	0.9	2.9	3.0	2.9	2.8	5.1	3.6	8.6	6.9
Bern University of Applied Sciences (BFH)	0.9	0.4	0.4	0.7	3.4	1.4	4.3	4.5	4.8	3.5	4.1
University of Applied Sciences and Arts Northwestern Switzerland (FHNW)	1.9	1.2	2.8	1.9	2.3	3.6	5.0	4.3	6.5	4.5	6.7
University of Applied Sciences Eastern Switzerland (FHO)	0.3	0.0	0.5	0.0	0.4	0.5	0.1	0.2	0.3	2.0	0.1
University of Applied Sciences Western Switzerland (HES-SO)	1.7	2.2	0.4	1.2	1.5	2.7	5.0	2.8	2.5	5.1	4.6
Lucerne University of Applied Sciences and Arts (HSLU)	0.9	0.5	1.9	1.8	1.3	0.1	0.9	0.2	1.1	2.3	1.5
University of Applied Sciences and Arts of Southern Switzerland (SUPSI)	0.3	0.9	1.0	0.5	0.5	0.7	1.3	0.4	0.6	1.3	2.6
Kalaisos University of Applied Sciences Switzerland	-	-	0.2	0.0	0.0	0.3	0.0	0.0	-	-	0.6
Universities of teacher education³	0.0	0.6	0.8	1.3	1.2	1.3	2.1	1.2	2.0	1.3	1.7
Hospitals (independent of higher education inst.)	-	-	-	-	-	-	-	-	-	1.0	4.0
Other research institutes⁴	-	-	-	-	-	-	-	-	-	20.6	24.2
Others⁵	47.7	42.0	44.3	37.0	51.5	49.1	53.0	51.8	113.2	80.6	67.3
Total	465.9	491.0	531.3	662.8	707.1	726.0	712.9	755.2	818.8	848.5	877.7

¹ Amounts lower than CHF 0.05 million are shown as zero.

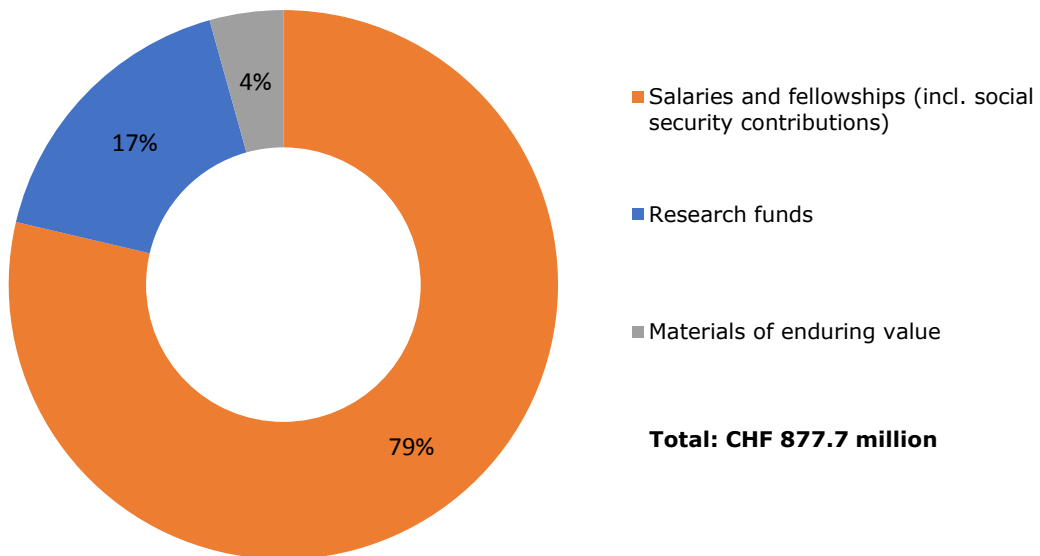
² Research institutes in the ETH Domain (EMPA, EAWAG, PSI, WSL)

³ Without universities of teacher education of FHNW and ZFH

⁴ SIAF, AORI, BITG, CREALP, EHB, FTL, Agroscope, FIBL, IRO, FUS, FMI, IDIAP, IHEID, IRR, ISSKA, IST, IKG, IUKB, IRSOL, IRB, ISR, PMOD, RWS, SIK-ISEA, FORS, SPFF, STH, CSEM, SIB, THCH et other Research Institutes

⁵ Museums, libraries, companies, non-profit organisations and not assignable to an institution (e.g. Doc.Mobility, Early/Advanced Postdoc.Mobility)

1.4 Use of approved amounts



As in previous years, the approved funds were used by the researchers mainly to cover personnel costs, whether for the financing of individual salaries/fellowships in the context of career funding or for the appointment of personnel in research projects.

1.5 Personnel in research projects

14,800 researchers were involved in SNSF-funded projects in 2015. This figure consists the applicants and their staff.

All in all, the SNSF funded approximately 10,000 members of personnel: 5,800 via project funding, 1,100 via career funding and 3,100 through programmes. They comprise:

	Total	Women	Men
Scientists ¹	33%	40%	60%
Personnel at doctoral level	50%	44%	56%
Technicians, support staff	17%	62%	38%
Total	100%	46%	54%

¹Senior researchers and post-docs

Funding for research projects primarily benefits the promotion of young scientists in Switzerland. Thus 75% of the collaborators are 35 years old or younger.

1.6 Success rates

Amounts in CHF million

	Success rate ¹			Number of applications submitted			Number of applications approved			Approved amount
	Total	Women	Men	Total	Women	Men	Total	Women	Men	
Projects	45%	43%	46%	2 486	549	1 937	1 117	235	882	441.4
Humanities and social sciences	43%	43%	43%	743	240	503	321	104	217	105.4
Mathematics, natural and engineering sciences	49%	40%	51%	841	108	733	416	43	373	148.9
Biology and medicine	43%	45%	42%	786	179	607	336	81	255	167.4
Interdisciplinary research	38%	32%	39%	116	22	94	44	7	37	19.8
Careers²										
Doc.CH	33%	39%	27%	142	72	70	47	28	19	9.7
Doc.Mobility	53%	52%	54%	310	147	163	165	77	88	8.2
Early Postdoc.Mobility	57%	59%	55%	715	271	444	404	160	244	33.0
Advanced Postdoc.Mobility ³	48%	49%	48%	311	121	190	150	59	91	17.4
Marie Heim-Vögtlin grants (MHV)	28%	28%	-	140	140	-	39	39	-	8.7
Ambizione	19%	19%	18%	360	120	240	67	23	44	34.8
SNSF professorships	16%	16%	16%	254	88	166	40	14	26	74.4
Programmes										
Sinergia	33%	33%	33%	126	24	102	42	8	34	64.5
SCOPES	47%	45%	47%	113	22	91	53	10	43	5.2
r4d programme ⁴	33%	-	33%	9	-	9	3	-	3	5.9
Infrastructures	64%	66%	56%	115	99	16	74	65	9	27.9
Science communication⁵	87%	88%	86%	396	137	259	344	120	224	4.7

¹Ratio of the number of applications approved to the number of applications submitted

²Success rates without follow-up applications

³Without return grants

⁴Based on pre-proposals for the thematic modules Ecosystems and Food Security

⁵Without the applications for the OAPEN.CH pilot project

The SNSF analyses the differences between the success rates of female and male applicants every year. For this purpose, it has introduced a gender equality monitoring system that examines the differences and attempts to identify the determining factors.

Submitted applications by gender

	Women	Men
Doc.CH	51%	49%
Doc.Mobility	47%	53%
Early Postdoc.Mobility	38%	62%
Advanced Postdoc.Mobility	39%	61%
Marie Heim-Vögtlin grants (MHV)	100%	0%
Ambizione	33%	67%
SNSF professorships	35%	65%
Projects	22%	78%

¹The proportion of female applicants is 100% as the MHV grant is a programme for women scientists.

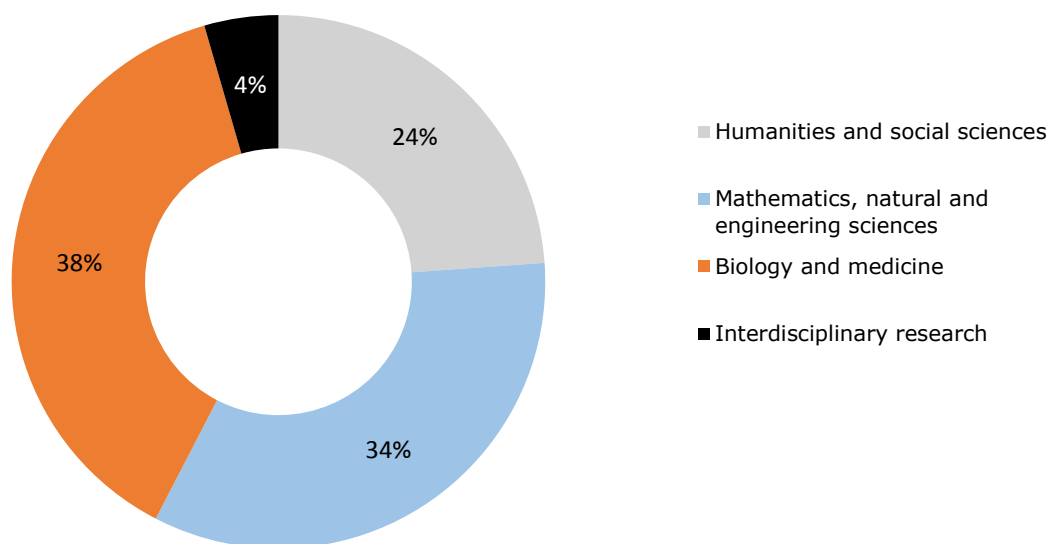
2. Projects

The SNSF supports research projects of high quality across all disciplines. The topics are selected by the researchers. The awarded grants mainly cover staff salaries and research costs.

2.1 Funding by research area

Amounts in CHF million

Distribution of the approved amounts



	Amount
Humanities and social sciences	105.4
Mathematics, natural and engineering sciences	148.9
Biology and medicine	167.4
Interdisciplinary research	19.8
Total	441.4

2.1.1 Funding by group of disciplines and gender

Amounts in CHF million

	Number of proposals submitted			Number of proposals approved			Amount approved		
	Total	Women	Men	Total	Women	Men	Total	Women	Men
Humanities and social sciences	743	240	503	321	104	217	105.4	35%	65%
Theology & religious studies, history, classical studies, archaeology, preh	114	26	88	49	14	35	19.2	44%	56%
Linguistics and literature, philosophy	115	37	78	57	19	38	17.0	35%	65%
Art studies, musicology, theatre and film studies, architecture	86	22	64	33	6	27	11.9	24%	76%
Ethnology, social and human geography	29	11	18	13	7	6	4.5	51%	49%
Psychology, educational studies	142	67	75	69	28	41	22.0	38%	62%
Sociology, social work, political sciences, media and communication studies, health	130	49	81	44	20	24	15.2	41%	59%
Economics, law	127	28	99	56	10	46	15.7	18%	82%
Mathematics, natural and engineering sciences	841	108	733	416	43	373	148.9	9%	91%
Mathematics	66	5	61	39	3	36	13.8	5%	95%
Astronomy, astrophysics and space sciences	34	3	31	21	2	19	8.5	12%	88%
Chemistry	115	18	97	66	7	59	28.6	7%	93%
Physics	161	7	154	96	4	92	41.9	6%	94%
Engineering sciences	308	46	262	111	15	96	31.1	13%	87%
Environmental sciences	82	15	67	41	6	35	11.6	14%	86%
Earth sciences	75	14	61	42	6	36	13.4	15%	85%
Biology and medicine	786	179	607	336	81	255	167.4	22%	78%
Basic biological research	190	42	148	98	19	79	56.6	16%	84%
General biology	68	12	56	44	8	36	21.6	18%	82%
Basic medical research	169	42	127	66	16	50	33.9	22%	78%
Experimental medicine	106	20	86	46	11	35	21.4	20%	80%
Clinical medicine	194	48	146	63	20	43	26.1	32%	68%
Preventive medicine (epidemiology/early diagnosis/prevention)	43	12	31	14	6	8	6.3	47%	53%
Social medicine	16	3	13	5	1	4	1.6	30%	70%
Interdisciplinary research	116	22	94	44	7	37	19.8	15%	85%
Total	2 486	549	1 937	1 117	235	882	441.4	21%	79%

2.1.2 Funding by group of disciplines and institution¹

Amounts in CHF million

	Universities									ETH Domain			Universities of applied sciences	Other research institutes ³	Universities of teacher education	Hospitals (not higher educ. inst.)	Others ⁴	Total	
	Berne	Basel	Fribourg	Geneva	Lucerne	Lausanne	Neuchâtel	St. Gallen	Ticino (USI)	Zurich	EPF Lausanne	ETH Zurich							Research institutes ²
Humanities and social sciences	10.9	12.4	5.6	11.2	1.2	7.3	6.3	1.3	2.8	18.9	0.7	3.7	0.2	13.7	4.4	4.4	-	0.6	105.4
Theology & religious studies, history, classical studies, archaeology, prehistory and early history	4.3	6.3	0.8	1.9	0.8	0.4	1.2	0.2	0.0	1.9	-	0.3	0.0	0.2	0.4	-	-	0.5	19.2
Linguistics and literature, philosophy	1.2	1.3	1.8	2.7	0.1	0.1	2.3	0.0	0.0	6.9	-	0.5	0.0	-	-	-	-	0.1	17.0
Art studies, musicology, theatre and film studies, architecture	0.1	0.5	-	0.3	-	0.9	-	0.0	-	1.2	0.2	0.9	0.0	6.8	0.9	-	-	-	11.9
Ethnology, social and human geography	0.7	0.5	0.3	-	-	0.4	0.7	-	-	1.3	0.4	-	0.2	-	-	-	-	-	4.5
Psychology, educational studies	3.1	1.6	0.4	5.5	-	2.0	-	-	-	4.3	-	0.5	0.0	0.4	-	4.1	-	0.0	22.0
Sociology, social work, political sciences, media and communication studies, health	0.3	1.7	1.9	0.6	0.0	2.4	0.4	0.0	0.9	1.2	-	0.4	0.0	3.4	1.6	0.3	-	0.0	15.2
Economics, law	1.1	0.5	0.4	0.0	0.2	1.1	1.7	1.1	1.8	2.1	0.1	1.1	0.0	2.8	1.5	-	-	-	15.7
Mathematics, natural and engineering sciences	14.8	7.8	3.6	17.6	-	2.7	3.0	0.3	2.7	11.8	27.6	39.2	13.8	1.4	2.1	-	-	0.3	148.9
Mathematics	0.7	0.5	-	2.6	-	0.2	1.5	-	1.2	1.9	2.8	2.4	0.0	-	-	-	-	-	13.8
Astronomy, astrophysics and space sciences	1.7	0.1	-	1.1	-	-	-	-	-	1.4	0.8	2.4	0.0	0.5	0.5	-	-	0.0	8.5
Chemistry	2.8	2.9	0.6	3.6	-	-	0.4	-	0.2	1.6	5.3	8.7	2.3	0.0	-	-	-	0.0	28.6
Physics	4.7	3.1	1.6	7.3	-	-	0.4	-	-	4.2	6.3	8.4	5.7	0.2	-	-	-	-	41.9
Engineering sciences	1.8	0.7	0.5	0.7	-	0.2	-	0.3	1.4	0.8	10.3	9.5	3.1	0.8	1.0	-	-	0.1	31.1
Environmental sciences	1.5	0.4	-	0.3	-	0.6	0.1	-	-	0.9	2.1	3.0	2.2	-	0.6	-	-	0.0	11.6
Earth sciences	1.7	0.2	0.8	1.9	-	1.8	0.6	-	-	1.0	-	4.7	0.5	-	-	-	-	0.2	13.4
Biology and medicine	19.9	23.7	4.0	25.7	-	27.8	2.1	-	1.8	27.2	7.8	16.4	3.4	1.4	4.0	-	1.8	0.4	167.4
Basic biological research	4.4	8.0	1.1	9.9	-	7.1	-	-	0.7	6.9	4.6	9.1	2.5	0.8	1.6	-	-	-	56.6
General biology	2.9	0.2	-	1.4	-	3.8	2.1	-	-	6.0	-	3.5	0.5	0.3	0.5	-	-	0.4	21.6
Basic medical research	2.6	3.4	2.3	7.6	-	6.6	-	-	-	6.0	2.2	1.8	0.0	-	1.3	-	-	-	33.9
Experimental medicine	4.0	2.7	0.6	1.5	-	4.9	-	-	0.5	3.5	1.0	0.9	0.0	-	0.6	-	1.1	-	21.4
Clinical medicine	3.8	6.8	-	4.2	-	4.6	-	-	-	4.4	-	0.8	0.5	0.3	-	-	0.7	-	26.1
Preventive medicine (epidemiology/early diagnosis/prevention)	1.8	2.2	-	1.1	-	0.4	-	-	0.5	0.0	-	0.3	0.0	-	-	-	-	-	6.3
Social medicine	0.4	0.3	-	-	-	0.3	-	-	-	0.5	-	-	0.0	-	-	-	-	-	1.6
Interdisciplinary research	1.5	1.3	0.1	2.6	-	1.6	0.5	-	0.1	4.2	2.7	2.8	0.8	0.4	0.8	-	0.4	-	19.8
Total	47.2	45.2	13.3	57.1	1.2	39.3	11.9	1.6	7.3	62.2	38.8	62.1	18.2	16.9	11.2	4.4	2.2	1.4	441.4

¹ If no application was submitted by the respective institution, this is denoted by a dash. Amounts lower than CHF 0.05 million are shown as zero.

² Research institutes in the ETH Domain (EMPA, EAWAG, PSI, WSL)

³ STAF, AORI, BITG, EHB, Agroscope, FiBL, IRO, FMI, IDIAP, IHEID, IST, IUKB, PMOD, FORS, SPF, SIK-ISEA, CSEM, SIB and other research institutes

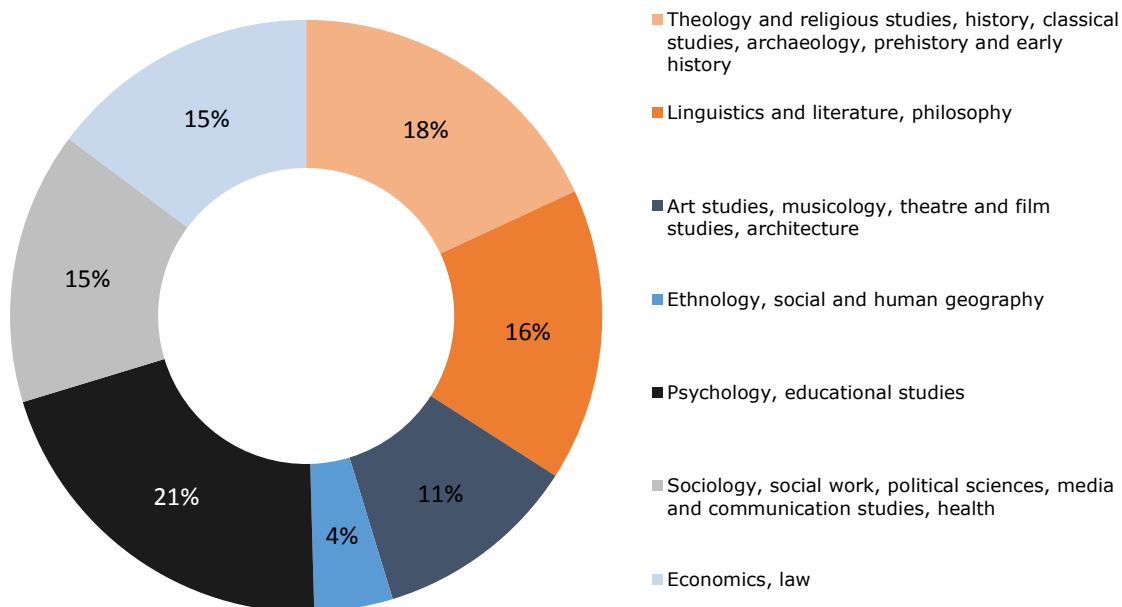
⁴ Museums, libraries, companies and non-profit organisations

2.2 Funding by group of disciplines

Amounts in CHF millions

Division I: Humanities and Social Sciences

Distribution of the approved amounts

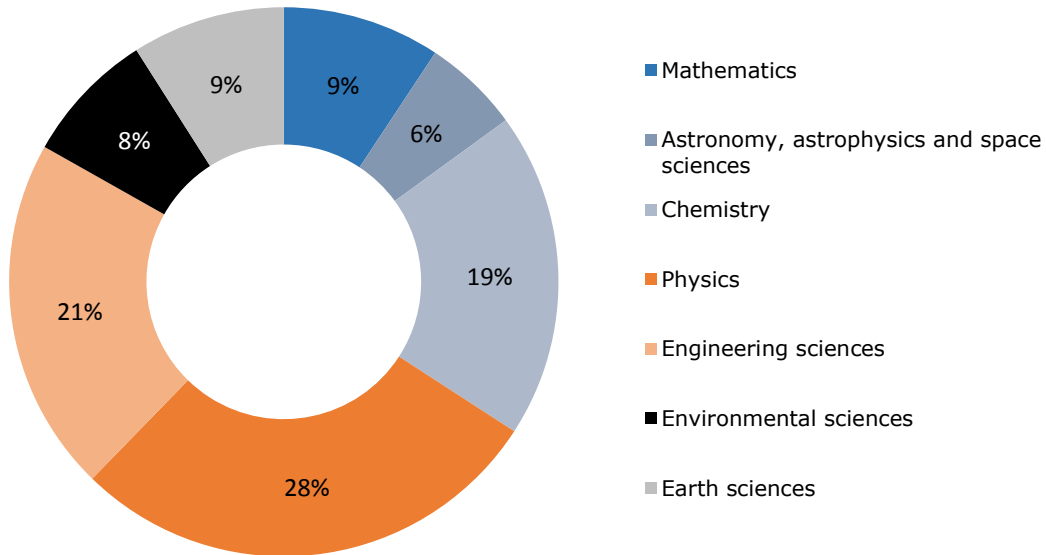


	Number	Amount
Theology and religious studies, history, classical studies, archaeology, prehistory and early history	49	19.2
Linguistics and literature, philosophy	57	16.9
Art studies, musicology, theatre and film studies, architecture	33	11.9
Ethnology, social and human geography	13	4.5
Psychology, educational studies	69	22.0
Sociology, social work, political sciences, media and communication studies, health	44	15.2
Economics, law	56	15.7
Total	321	105.4

The amount of funding awarded in the humanities and social sciences rose by 9% year-on-year. While approximately the same number of projects were financed, the funding awarded per project was higher. The humanities and social sciences each received around half of the funds awarded.

Division II: Mathematics, Natural and Engineering Sciences

Distribution of the approved amounts

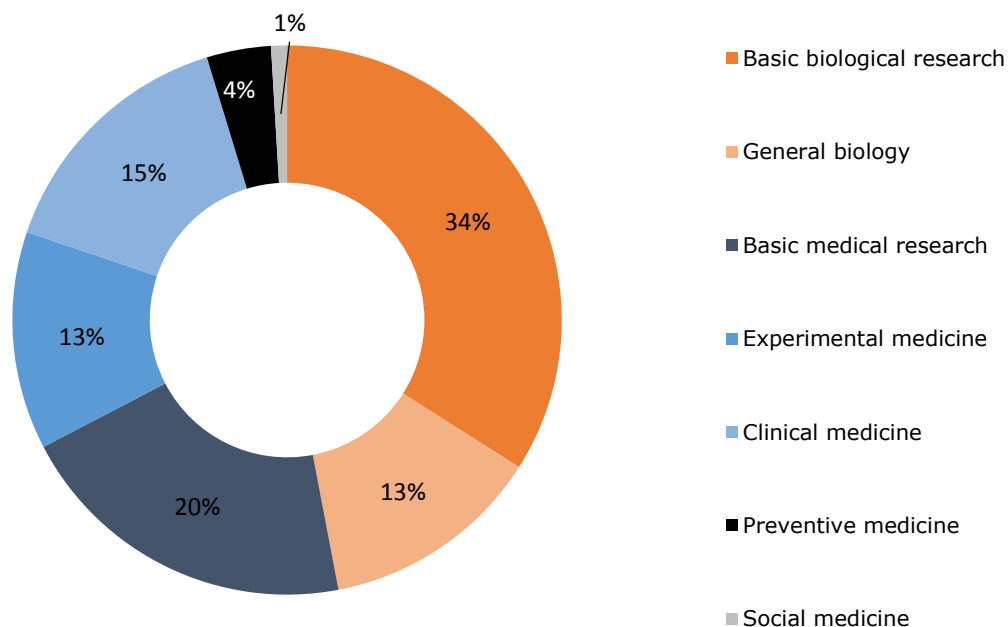


	Number	Amount
Mathematics	39	13.8
Astronomy, astrophysics and space sciences	21	8.5
Chemistry	66	28.6
Physics	96	41.9
Engineering sciences	111	31.1
Environmental sciences	41	11.6
Earth sciences	42	13.4
Total	416	148.9

The distribution of the approved amounts reflects demand in the respective groups of disciplines and remains largely unchanged year-on-year.

Division III: Biology and Medicine

Distribution of the approved amounts



	Number	Amount
Basic biological research	98	56.6
General biology	44	21.6
Basic medical research	66	33.9
Experimental medicine	46	21.4
Clinical medicine	63	26.1
Preventive medicine (epidemiology/early diagnosis/prevention)	14	6.3
Social medicine	5	1.5
Total	336	167.4

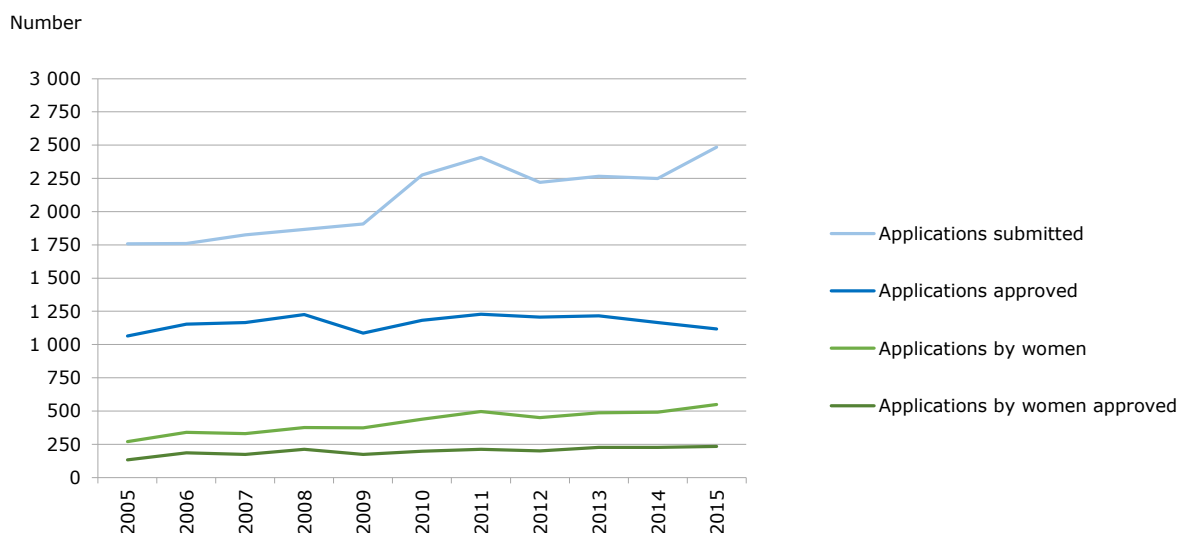
The funds of division III are mainly allocated to basic biological and medical research. Changes were recorded year-on-year primarily in basic biological research (-4%), experimental medicine (-5%), general biology (+3%) and clinical medicine (+3%).

2.3 Grants, reductions and rejections

Amounts in CHF million

	Number	Amount	Grants	Reductions	Rejections	
Humanities and social sciences						
Applications submitted	743		43%		57%	Number
Requested amount		267.4	39%	6%	54%	Amount
Grants	321	105.4				
Reductions in approved applications	(223)	17.0				
Rejections, withdrawals	422	145.0				
Mathematics, natural and engineering sciences						
Applications submitted	841		49%		51%	
Requested amount		333.0	45%	14%	42%	
Grants	416	148.9				
Reductions in approved applications	(309)	45.7				
Rejections, withdrawals	425	138.4				
Biology and medicine						
Applications submitted	786		43%		57%	
Requested amount		394.1	42%	8%	50%	
Grants	336	167.4				
Reductions in approved applications	(223)	30.2				
Rejections, withdrawals	450	196.5				
Interdisciplinary research						
Applications submitted	116		38%		62%	
Requested amount		55.4	36%	5%	60%	
Grants	44	19.8				
Reductions in approved applications	(24)	2.6				
Rejections, withdrawals	72	33.0				
Total						
Applications submitted	2486		45%		55%	
Requested amount		1,049.9	42%	9%	49%	
Grants	1117	441.4				
Reductions in approved applications	(779)	95.5				
Rejections, withdrawals	1369	513.0				

2.4 Number of applications and grants since 2005

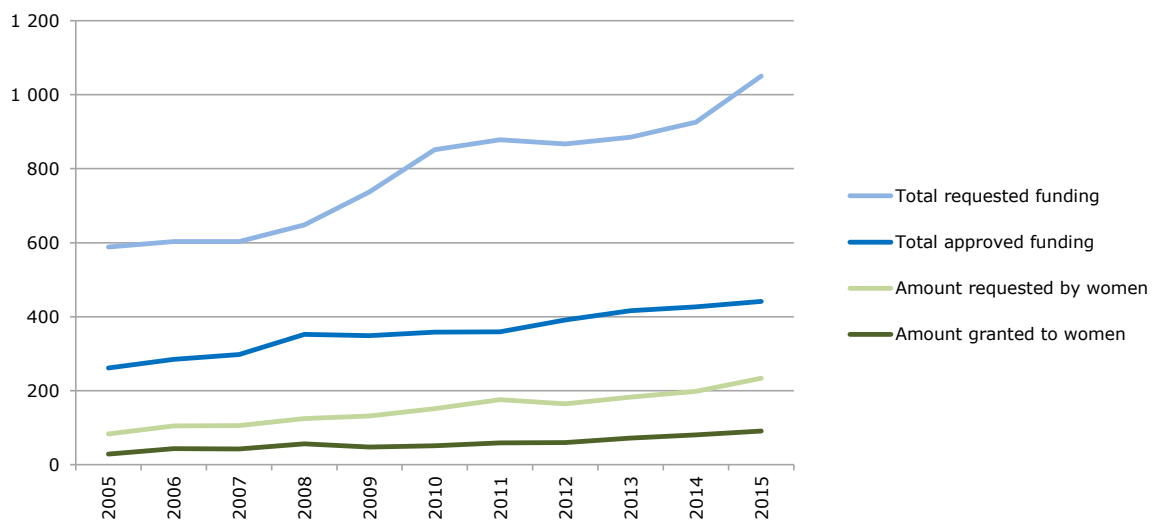


Between 2005 and 2011, the number of applications in project funding rose continually (by 37% in total). Since then, the figure has been high but stable. In 2015, however, the number of applications was again 11% higher year-on-year. While the share of applications by women remains low, at 22% it again equals the previous year's figure.

Year	Number of applications submitted			Number of applications approved			Success rate
	Total	Women	Men	Total	Women	Men	
2005	1,758	15%	85%	1,065	13%	87%	61%
2006	1,753	19%	81%	1,149	16%	84%	66%
2007	1,825	18%	82%	1,165	15%	85%	64%
2008	1,867	20%	80%	1,227	17%	83%	66%
2009	1,902	20%	80%	1,083	16%	84%	57%
2010	2,273	19%	81%	1,180	17%	83%	52%
2011	2,407	21%	79%	1,224	17%	83%	51%
2012	2,221	20%	80%	1,206	17%	83%	54%
2013	2,257	22%	78%	1,208	19%	81%	54%
2014	2,249	22%	78%	1,165	19%	81%	52%
2015	2,486	22%	78%	1,117	21%	81%	45%

2.5 Requested and approved amounts since 2005

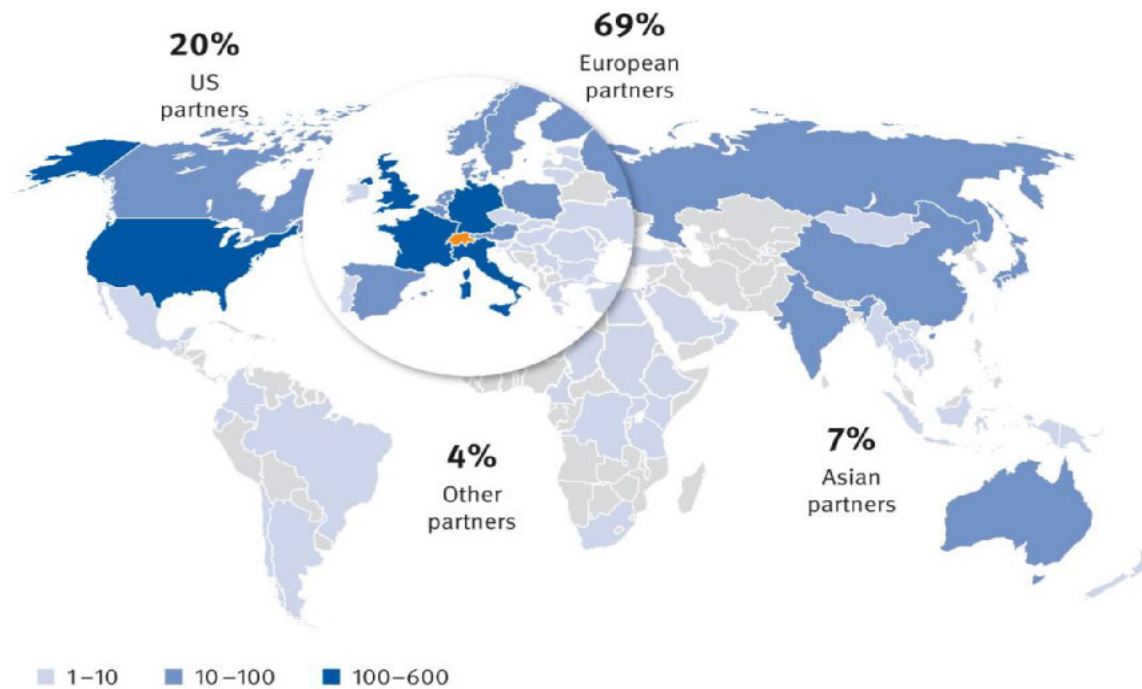
CHF million



The demand for grants in project funding rose again.

Year	Amount requested			Amount approved			Approval rate
	Total	Women	Men	Total	Women	Men	
2005	585	14%	86%	261	11%	89%	45%
2006	603	17%	83%	285	15%	85%	47%
2007	603	17%	83%	298	14%	86%	49%
2008	648	19%	81%	352	16%	84%	54%
2009	737	18%	82%	349	14%	86%	47%
2010	851	18%	82%	358	14%	86%	42%
2011	878	20%	80%	359	17%	83%	41%
2012	867	19%	81%	391	15%	85%	45%
2013	885	21%	79%	416	17%	83%	47%
2014	926	21%	79%	427	19%	81%	46%
2015	1,050	22%	78%	441	21%	79%	42%

2.6 International collaborations



The project applications approved by the SNSF in 2015 included a total of 2371 planned collaborations. Most of them involved European partners (69%), followed by partners from North America (20%), Asia (7%) and other countries (4%).

3. Careers

The SNSF has a wide range of funding options in place to promote the careers of young researchers.

3.1 Funding by scheme

Amounts in CHF million

	Number of applications submitted					Number of applications approved					Approved amount
	New applications			Follow-up applications		New applications			Follow-up applications		
	Total	Women	Men	Women	Men	Total	Women	Men	Women	Men	
Career funding schemes											
Doc.CH	142	72	70	-	-	47	28	19	-	-	9.7
MD-PhD fellowships ¹	7	2	5	-	-	7	2	5	-	-	1.3
Doc.Mobility	310	147	163	5	14	165	77	88	2	8	8.2
Early Postdoc.Mobility	715	271	444	-	-	404	160	244	-	-	33.1
Advanced Postdoc.Mobility ²	311	121	190	8	11	150	59	91	2	4	17.4
Marie Heim-Vögtlin grants (MHV)	140	140	-	9	-	39	39	-	6	-	8.7
Ambizione	360	120	240	5	-	67	23	44	5	-	34.8
Ambizione Energy ³	30	4	26	-	-	4	1	3	-	-	2.8
SNSF professorships	254	88	166	12	20	40	14	26	10	18	74.4
Assistant Professor (AP) Energy grants ³	17	3	14	-	-	7	2	5	-	-	7.6
Measures for promoting careers											
Graduate courses	3	-	3	-	-	3	-	3	-	-	0.1
International short visits	152	52	100	-	-	130	48	82	-	-	1.0
Research semesters ⁴	1	-	1	-	-	1	-	1	-	-	0.1
Mobility grants for doctoral students ⁵	(60)	(28)	(32)	-	-	(60)	(28)	(32)	-	-	(0.8)
120% support grants ⁵	(28)	(21)	(7)	-	-	(26)	(20)	(6)	-	-	(0.4)
Total	2,442	1,020	1,422	39	45	1,064	453	611	25	30	199.0

¹The national MD-PhD programme is managed by the SAMS. The SNSF supports 7 candidates per year.

²Without 81 applications for return grants (37 women; 44 men) and 30 approved return grants (11 women; 19 men). Amount approved: CHF 2.2 million

³Special schemes in connection with the Federal Council's Dispatch on the "Coordinated Swiss Energy Research Action Plan - Measures for the Years 2013-2016"

⁴Research semesters for departing members of the National Research Council

⁵Mobility grants, "120% support grants" and gender equality grants are supplementary grants in projects and are therefore not treated as separate applications. Hence they are not accounted for in the total number of applications

The demand for career funding remained high but stable. The number of applications rose by 3% in total. This increase is attributable to the postdoc mobility fellowships (Early and Advanced Postdoc.Mobility), Doc.CH and, in particular, Ambizione. All in all, the amount of awarded funding was 5% higher than in the previous year.

3.1.1 Careers

Funding by scheme and research area

Amounts in CHF million

	Number of applications submitted					Number of applications approved					Success rate ¹			Amount approved
	New proposals		Men	Follow-up applications		New proposals		Men	Follow-up applications		Total	Women	Men	Total
	Total	Women		Women	Men	Total	Women		Women	Men				
Career funding schemes														
Doc.CH	142	72	70	-	-	47	28	19	-	-	33%	39%	27%	9.7
Humanities and social sciences	142	72	70	-	-	47	28	19	-	-	33%	39%	27%	9.7
MD-PhD fellowships²	7	2	5	-	-	7	2	5	-	-	100%	100%	100%	1.3
Biology and medicine	7	2	5	-	-	7	2	5	-	-	100%	100%	100%	1.3
Doc.Mobility	310	147	163	5	14	164	77	87	2	8	53%	52%	53%	8.2
Humanities and social sciences	264	129	135	5	11	136	65	71	2	5	52%	50%	53%	6.9
Mathematics, natural and engineering sciences	25	7	18	-	2	16	5	11	-	2	64%	71%	61%	0.8
Biology and medicine	21	11	10	-	1	12	7	5	-	1	57%	64%	50%	0.6
Early Postdoc.Mobility	715	271	444	-	-	404	160	244	-	-	57%	59%	55%	33.1
Humanities and social sciences	197	109	88	-	-	111	65	46	-	-	56%	60%	52%	8.9
Mathematics, natural and engineering sciences	252	49	203	-	-	146	27	119	-	-	58%	55%	59%	11.9
Biology and medicine	266	113	153	-	-	147	68	79	-	-	55%	60%	52%	12.2
Advanced Postdoc.Mobility³	311	121	190	8	11	150	59	91	2	4	48%	49%	48%	17.4
Humanities and social sciences	99	47	52	5	2	44	20	24	2	1	44%	43%	46%	5.7
Mathematics, natural and engineering sciences	78	17	61	-	4	39	10	29	-	1	50%	59%	48%	3.9
Biology and medicine	134	57	77	3	5	67	29	38	-	2	50%	51%	49%	7.7
Marie Heim-Vögtlin programme (MHV)	140	140	-	-	-	39	39	-	6	-	28%	28%	-	8.7
Humanities and social sciences	58	58	-	6	-	14	14	-	3	-	24%	24%	-	2.8
Mathematics, natural and engineering sciences	27	27	-	2	-	8	8	-	2	-	30%	30%	-	1.9
Biology and medicine	55	55	-	1	-	17	17	-	1	-	31%	31%	-	4.0
Ambizione	360	120	240	5	-	67	23	44	5	-	19%	19%	18%	34.8
Humanities and social sciences	87	43	44	3	-	15	7	8	3	-	17%	16%	18%	7.4
Mathematics, natural and engineering sciences	163	36	127	-	-	28	8	20	-	-	17%	22%	16%	12.8
Biology and medicine	110	41	69	2	-	24	8	16	2	-	22%	20%	23%	14.5
Ambizione Energy⁴	30	4	26	-	-	4	1	3	-	-	13%	25%	12%	2.8
Humanities and social sciences	2	-	2	-	-	-	-	-	-	-	0%	-	0%	-
Mathematics, natural and engineering sciences	28	4	24	-	-	4	1	3	-	-	14%	25%	13%	2.8
Biology and medicine	-	-	-	-	-	-	-	-	-	-	-	-	-	-
SNSF professorships	254	88	166	12	20	40	14	26	10	18	16%	16%	16%	74.4
Humanities and social sciences	81	40	41	5	5	14	4	10	4	5	17%	10%	24%	22.9
Mathematics, natural and engineering sciences	85	16	69	1	5	13	4	9	1	5	15%	25%	13%	23.7
Biology and medicine	88	32	56	6	10	13	6	7	5	8	15%	19%	13%	27.8
Assistant Professor (AP) Energy Grants⁴	17	3	14	-	-	7	2	5	-	-	41%	67%	36%	7.6
Humanities and social sciences	1	-	1	-	-	1	-	1	-	-	100%	-	100%	1.2
Mathematics, natural and engineering sciences	16	3	13	-	-	6	2	4	-	-	38%	67%	31%	6.4
Biology and medicine	-	-	-	-	-	-	-	-	-	-	-	-	-	-
Measures for promoting careers														
Graduate courses	3	-	3	-	-	3	-	3	-	-	100%	-	100%	0.1
Humanities and social sciences	3	-	3	-	-	3	-	3	-	-	100%	-	100%	0.1
International short visits	152	52	100	-	-	130	48	82	-	-	86%	92%	82%	1.0
Humanities and social sciences	65	25	40	-	-	54	23	31	-	-	83%	92%	78%	0.4
Mathematics, natural and engineering sciences	50	10	40	-	-	41	8	33	-	-	82%	80%	83%	0.3
Biology and medicine	37	17	20	-	-	35	17	18	-	-	95%	100%	90%	0.3
Research semesters⁵	1	-	1	-	-	1	-	1	-	-	100%	-	100%	0.1
Mobility grants⁶	(60)	(28)	(32)	-	-	(44)	(21)	(23)	-	-	73%	75%	72%	(0.5)
120% support grants⁶	(28)	(21)	(7)	-	-	(12)	(7)	(5)	-	-	43%	33%	71%	(0.3)
Total	2,442	1,020	1,422	39	45	1,063	453	610	25	30	44%	44%	43%	199.0

¹Ratio of the number of applications approved to the number of applications submitted (new applications)

²The national MD-PhD programme is managed by the SAMS. The SNSF supports 7 candidates per year

³Without 81 applications for return grants (37 women; 44 men) and 30 approved return grants (11 women; 19 men). Amount approved: CHF 2.2 million

⁴Special schemes in connection with the Federal Council's Dispatch on the "Coordinated Swiss Energy Research Action Plan - Measures for the Years 2013-2016"

⁵Research semesters for departing members of the Research Council

⁶Mobility grants are supplementary grants and are therefore not treated as separate applications. Hence they are not accounted for in the total number of applications, but are considered in the approved amount.

3.1.2 Careers - Funding by scheme and institution¹

Amounts in CHF million

	Universities									ETH Domain			Various ³	Total	
	Berne	Basel	Fribourg	Geneva	Lucerne	Lausanne	Neuchâtel	St. Gallen	Ticino (USI)	Zurich	EPF Lausanne	ETH Zurich			Research institutes ²
Number of applications approved⁴															
Doc.CH	6	6	2	4	-	4	2	1	-	15	-	2	-	5	47
MD-PhD fellowships	-	-	-	-	-	-	-	-	-	-	-	-	-	7	7
Marie Heim-Vögtlin programme (MHV)	3	11	-	7	-	4	-	-	-	4	4	4	1	1	39
Ambizione	5	6	1	11	-	6	1	-	1	10	6	15	1	4	67
Ambizione Energy ⁵	-	-	-	-	-	-	-	-	-	-	1	2	1	-	4
SNSF professorships	4	3	2	8	-	5	1	-	1	10	1	3	-	2	40
Assistant Professor (AP) Energy grants ⁵	-	-	-	1	-	-	-	-	-	1	3	2	-	-	7
Graduate courses	-	-	-	-	-	-	-	2	-	1	-	-	-	-	3
International short visits	-	-	-	-	-	-	-	-	-	-	-	-	-	130	130
Research semesters	-	-	-	-	-	-	1	-	-	-	-	-	-	-	1
Total	18	26	5	31	0	19	5	3	2	41	15	28	3	149	345

Amounts approved⁶

Doc.CH	1.3	1.1	0.6	1.0	-	1.0	0.4	0.2	0.0	2.7	-	0.5	-	0.8	9.7
MD-PhD fellowships	-	-	-	-	-	-	-	-	-	-	-	-	-	1.3	1.3
Marie Heim-Vögtlin programme (MHV)	0.8	2.1	-	1.4	-	1.0	0.0	-	-	1.0	1.0	0.9	0.2	0.3	8.7
Ambizione	2.5	3.6	0.4	5.4	-	3.2	0.5	-	0.5	5.8	2.6	7.7	0.5	2.1	34.8
Ambizione Energy	-	-	-	-	-	-	-	-	-	-	0.6	1.3	0.9	-	2.8
SNSF professorships	9.7	7.1	3.6	13.1	0.6	7.4	1.6	0.0	1.5	17.8	1.7	7.2	-	3.3	74.4
Assistant Professor (AP) Energy grants	-	-	-	1.2	-	-	-	-	-	1.2	2.9	2.4	-	-	7.6
Graduate courses	-	-	-	-	-	-	-	0.0	-	0.0	-	-	-	-	0.1
International short visits	-	-	-	-	-	-	-	-	-	-	-	-	-	1.0	1.0
Research semesters	-	-	-	-	-	-	0.1	-	-	-	-	-	-	-	0.1
Total	14.2	13.9	4.7	22.1	0.6	12.6	2.5	0.3	2.0	28.5	8.8	20.0	1.6	8.7	140.4

¹ Without Doc.Mobility/Early/Advanced Postdoc.Mobility since these cannot be allocated to the individual higher education institutions. If no application was submitted by the respective institution, this is denoted by a dash. Amounts lower than CHF 0.05 million are shown as zero.

² Research institutes in the ETH Domain (EMPA, EAWAG, PSI, WSL)

³ Universities of applied sciences, Universities of teacher education, Hospitals, other research institutes, companies/private sector, non-profit organisations and not assignable to an institution

⁴ Includes only new submissions

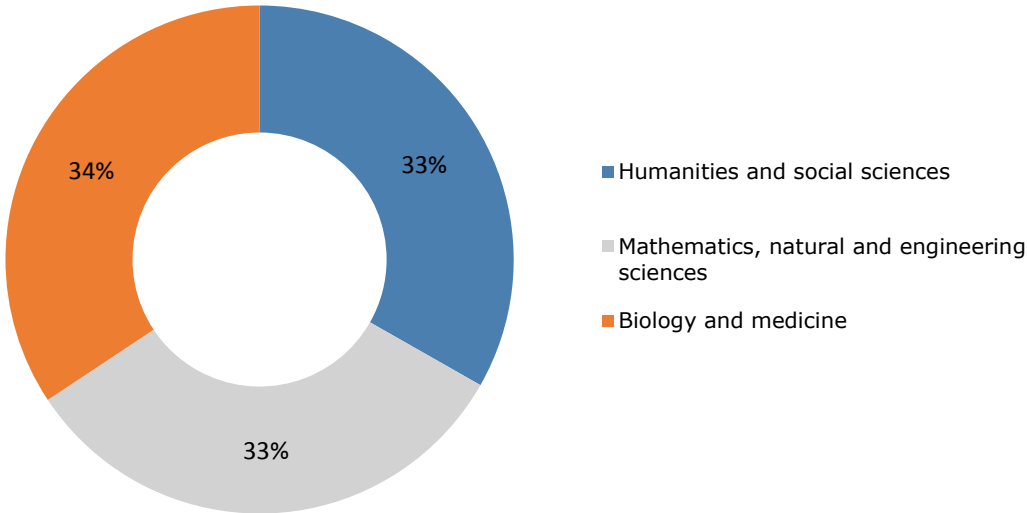
⁵ Special schemes in the context of the Dispatch on the "Coordinated Swiss Energy Research Action Plan - Measures for the Years 2013-2016".

⁶ Includes new applications and follow-up applications

3.2 Funding by research area

Amounts in CHF million

Distribution of the approved amounts



	Amount
Humanities and social sciences	66.1
Mathematics, natural and engineering sciences	64.6
Biology and medicine	68.3
Total	199.0

4. Programmes

Programmes are funding schemes with pre-defined thematic, conceptual and organisational parameters. They are either suggested by researchers or their home institutions, or established by political actors.

4.1 Funding by scheme

Amounts in CHF million

	Number	Amount
National Research Programmes (NRPs)	7	4.5
National Centres of Competence in Research (NCCRs)¹	330	75.0
Sinergia	42	64.5
International programmes	150	29.8
Multilateral collaboration	2	0.2
Swiss Programme for Research on Global Issues for Development (r4d programme)	20	6.2
SCOPEs	53	5.2
ERA-NET	17	4.4
Bilateral Programmes	58	13.9
Scientific and Technological Cooperation Programme Switzerland-Russia	25	5.9
Scientific and Technological Cooperation between Switzerland and Rio de Janeiro (STCPSRJ)	12	3.0
Sino-Swiss Science and Technology Cooperation	9	2.1
Korean-Swiss Science and Technology Programme	12	2.9
precoR	6	2.1
Spezialprogramme Universitäre Medizin (Longitudinalstudien)²	-	26.5
Doctoral programmes (ProDoc)²	-	1.3
Total	535	203.6

¹ Sub-projects

² Additional personnel costs and supplementary grants

4.2 National Research Programmes

Amounts in CHF million

The National Research Programmes (NRPs) study problems of societal, political and economic importance for Switzerland. The topics are prescribed by the Federal Council.

	Approved amount 2015 ¹	Overall budget	Overall amount approved up to 2015 ²	Duration
Current NRPs				
NRP 60 Gender Equality	0.0	8.0	7.4	2010-2015
NRP 63 Stem Cells and Regenerative Medicine	0.2	10.0	9.2	2010-2014
NRP 64 Opportunities and Risks of Nanomaterials	0.1	12.0	10.9	2010-2015
NRP 66 Resource Wood	0.3	18.0	16.6	2012-2017
NRP 67 End of Life	0.3	15.0	12.3	2012-2018
NRP 68 Sustainable Use of Soil as a Resource	2.0	13.0	11.3	2013-2017
NRP 69 Healthy Nutrition and Sustainable Food Production	0.2	13.0	7.7	2013-2017
NRP 70 Energy Turnaround	0.3	37.0	30.4	2013-2018
NRP 71 Managing Energy Consumption	0.3	8.0	6.1	2013-2018
Joint Programming Initiative on Agriculture, Food Security and Climate Change (FACCE-JPI)	0.8	4.0	3.8	2013-2017
New NRPs				
NRP 72 Antimicrobial Resistance	-	20.0	-	2017-2021
NRP 74 Smarter Health Care	-	20.0	-	2017-2021
NRP 75 Big data	-	25.0	-	2017-2021
Total	4.5	203.0	115.7	

¹ Excluding grants for formally terminated programmes

² These amounts do not take account of repayments, third-party funds, etc.

In June 2015, the Federal Council launched three new National Research Programmes: NRP 72 "Antimicrobial Resistance", NRP 74 "Smart Health Care" and NRP 75 "Big Data". The call for proposals was issued in autumn 2015. The pre-proposals and proposals will be examined and evaluated in 2016. The three NRPs are expected to make important contributions to data management and the health care system. They will run for five years with a total budget CHF 65 million.

4.2.1 National Research Programmes - Research grants¹ by research area and institution²

Amounts in CHF million

	Humanities and social sciences	Mathematics, natural and engineering sciences	Biology and medicine	Total
Universities	0.3	-	0.9	1.3
Berne	0.2	-	0.0	0.3
Basel	-	-	0.0	0.0
Fribourg	0.0	-	-	0.0
Geneva	-	-	-	-
Lucerne	-	-	-	-
Lausanne	-	-	0.2	0.2
Neuchâtel	0.1	-	0.6	0.6
St. Gallen	-	-	-	-
Ticino (USI)	-	-	-	-
Zurich	0.0	-	0.1	0.1
ETH Domain	0.3	0.5	0.1	0.9
EPF Lausanne	-	0.2	-	0.2
ETH Zurich	0.1	0.3	0.0	0.4
Research institutes ³	0.2	0.1	0.1	0.3
Universities of applied sciences⁴	-	0.1	-	0.1
Various⁵	0.1	0.3	1.1	1.5
Total	0.7	0.9	2.1	3.8

¹Without implementation mandates

²If no application was submitted by the respective institution, this is denoted by a dash. Amounts lower than CHF 0.05 million are shown as zero.

³Research institutes in the ETH Domain (EMPA, EAWAG, PSI, WSL)

⁴Including universities of teacher education

⁵Research centres, companies and non-profit organisations

4.3 National Centres of Competence in Research (NCCR)

Amounts in CHF million

With the National Centres of Competence in Research the SNSF promotes long-term research networks in areas of strategic significance for the future of Swiss science, economy and society.

2005 series	Contribution SNSF 2015 ¹	Contribution SNSF for 12 years	Total budget for 12 years	Start	Home institution
NCCR Affective Sciences: Emotions in Individual Behaviour and Social Processes	1.7	28.1	92.0	2005	University of Geneva
NCCR Democracy: Challenges to Democracy in the 21st Century	1.3	20.1	45.0	2005	University of Zurich
NCCR Iconic Criticism: Power and Importance of Pictures (Eikones)	1.2	19.9	49.8	2005	University of Basel
NCCR Mediality: Historical Perspectives	1.2	15.9	33.6	2005	University of Zurich
NCCR Trade Regulation: International Trade Regulation - From Fragmentation to Coherence	1.3	26.4	37.0	2005	University of Berne
Total	6.7	110.4	257.4		
2010 series	Contribution SNSF 2015 ¹	Contribution SNSF for 8 years	Total budget for 8 years	Start	Home institution
NCCR Chemical Biology: Visualisation and Control of Biological Processes Using Chemistry	4.2	28.2	57.3	2010	University of Geneva / ETH Zurich
NCCR Kidney.CH: Kidney Control of Homeostasis	5.5	33.1	46.6	2010	University of Zurich
NCCR LIVES: Overcoming vulnerability: life course perspectives	4.0	29.2	79.0	2011	University of Lausanne / University of Geneva
NCCR MUST: Molecular Ultrafast Sciences and Technology	6.0	35.1	80.5	2010	ETH Zurich / University of Berne
NCCR QSIT: Quantum Science and Technology	5.6	37.9	113.2	2011	ETH Zurich / University of Basel
NCCR Robotics: Intelligent Robots for Improving the Quality of Life	4.4	28.7	62.1	2010	EPF Lausanne / ETH Zurich
NCCR SYNAPSY: The synaptic bases of mental diseases	4.7	35.0	94.7	2010	EPF Lausanne / University of Lausanne / University of Geneva
NCCR TransCure: From transport physiology to identification of therapeutic targets	3.1	25.9	58.8	2010	University of Berne
Total	37.5	253.1	592.2		
2014 series	Contribution SNSF 2015 ¹	Contribution SNSF for 4 years	Total budget for 4 years	Start	Home institution
NCCR Bio-Inspired Materials	3.0	12.0	27.8	2014	University of Fribourg
NCCR Digital Fabrication: Advanced Building Processes in Architecture	3.5	13.4	25.0	2014	ETH Zurich
NCCR MARVEL: Computational Materials - Design and Discovery	4.4	18.0	35.9	2014	EPF Lausanne
NCCR MSE: Molecular Systems Engineering	4.2	16.9	28.2	2014	University of Basel / ETH Zurich
NCCR On the Move: The Migration-Mobility Nexus	4.3	17.2	25.4	2014	University of Neuchâtel
NCCR PlanetS: Origin, Evolution, and Characterisation of Planets	4.4	17.6	34.4	2014	University of Berne / University of Geneva
NCCR RNA & Disease: The Role of RNA Biology in Disease Mechanisms	4.1	16.7	39.8	2014	University of Berne / ETH Zurich
NCCR SwissMAP: The Mathematics of Physics	2.9	11.2	28.0	2014	University of Geneva / ETH Zurich
Total	30.8	123.0	244.5		
All NCCRs	75.0	486.5	1,094.1		

¹Also contains contributions for management, knowledge and technology transfer, promotion of young scientists, etc.

4.3.1 National Centres of Competence in Research - Research grants by research area and institution (SNSF portion only)¹

Amounts in CHF million

	Humanities and social sciences	Mathematics, natural and engineering sciences	Biology and medicine	Total
Universities	14.4	15.7	15.0	45.1
Berne	1.7	3.8	3.9	9.4
Basel	1.0	4.2	0.8	5.9
Fribourg	0.1	2.4	0.4	3.0
Geneva	2.6	4.4	3.6	10.6
Lucerne	0.2	-	-	0.2
Lausanne	3.1	-	1.7	4.8
Neuchâtel	3.3	0.4	-	3.7
St. Gallen	-	-	-	-
Ticino (USI)	-	-	-	-
Zurich	2.5	0.5	4.6	7.6
ETH Domain	3.4	17.8	5.3	26.6
EPF Lausanne	0.0	6.2	3.9	10.1
ETH Zurich	3.4	11.5	1.5	16.3
Research institutes ²	-	0.2	-	0.2
Universities of applied sciences	0.0	-	-	0.0
Others³	0.0	2.1	1.2	3.2
Total	18.0	35.7	21.6	75.0

¹Amounts lower than CHF 0.05 million are shown as zero.

²Research institutes in the ETH Domain (EMPA, EAWAG, PSI, WSL)

³Research centres, companies and non-profit organisations

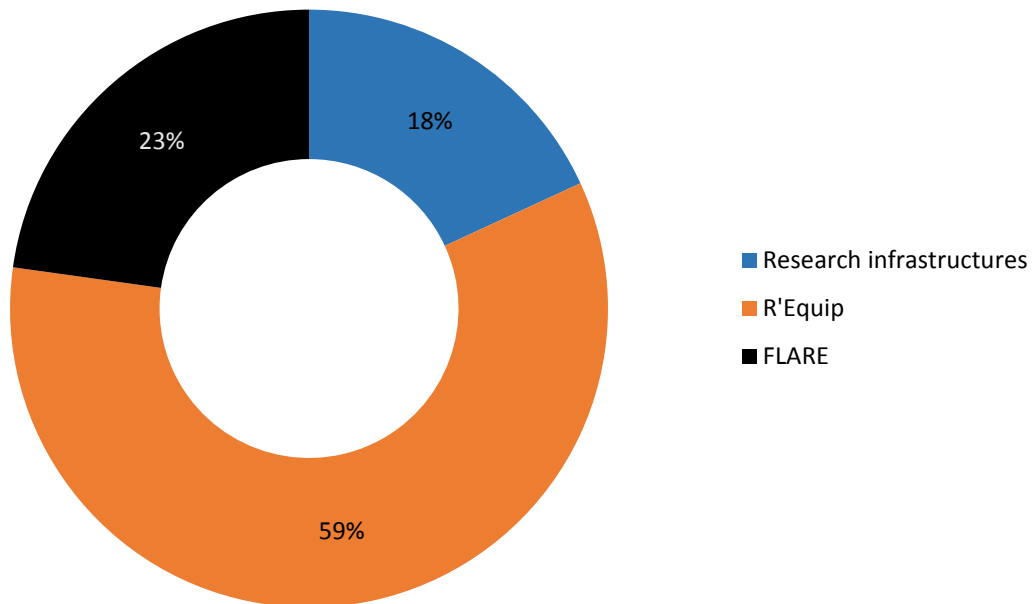
5. Infrastructures

In individual cases, the SNSF provides direct funding for research infrastructures that are indispensable for research projects. This is complemented by specific funding programmes.

5.1 Funding by scheme

Amounts in CHF million

Distribution of the approved amounts

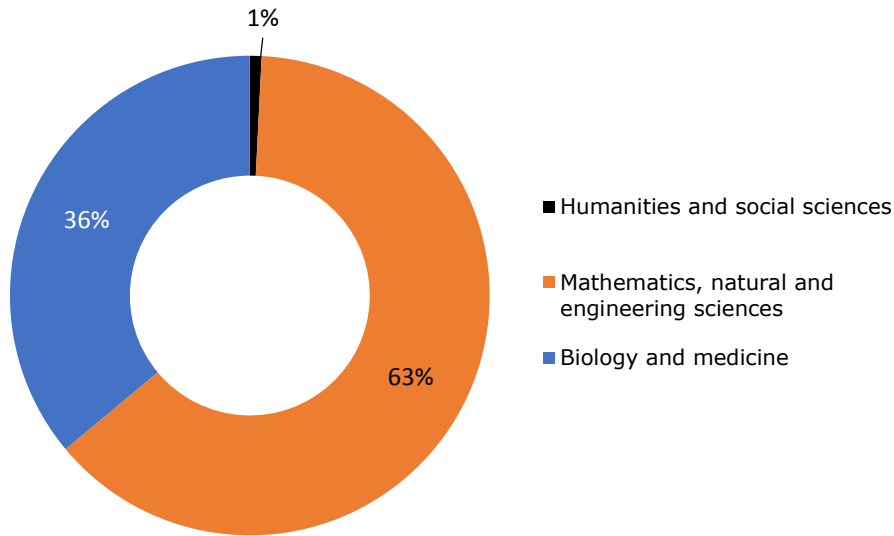


	Number	Amount
Research infrastructures	5	5.1
R'Equip	101	16.5
FLARE	9	6.4
Total	115	27.9

5.2 Funding by research area

Amounts in CHF million

Distribution of the approved amounts



	Amount
Humanities and social sciences	0.2
Mathematics, natural and engineering sciences	17.6
Biology and medicine	10.1
Total	27.9

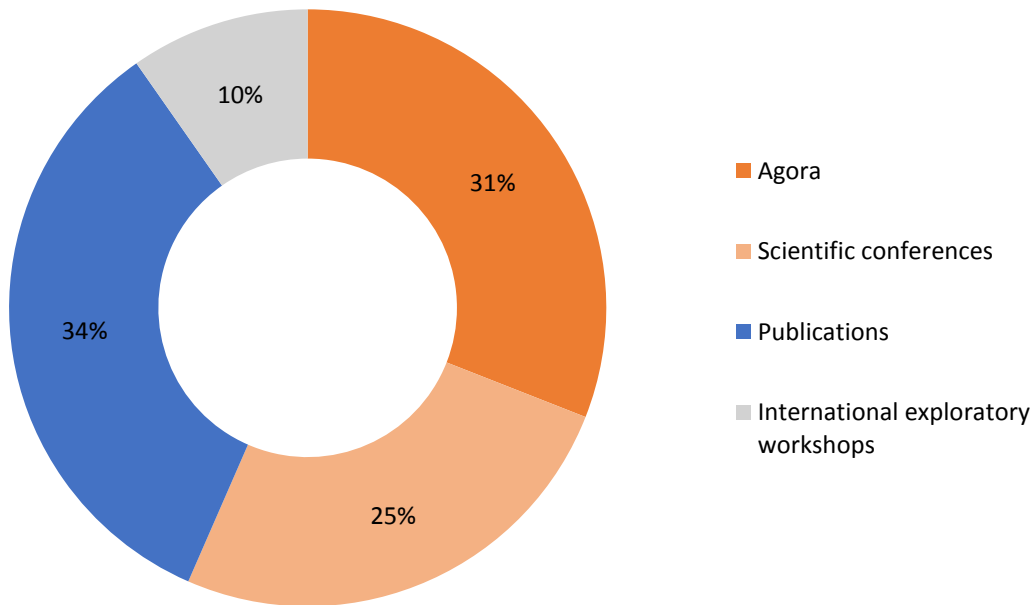
6. Science communication

The SNSF promotes communication between researchers as well as between science and society.

6.1 Funding by scheme

Amounts in CHF million

Distribution of the approved amounts

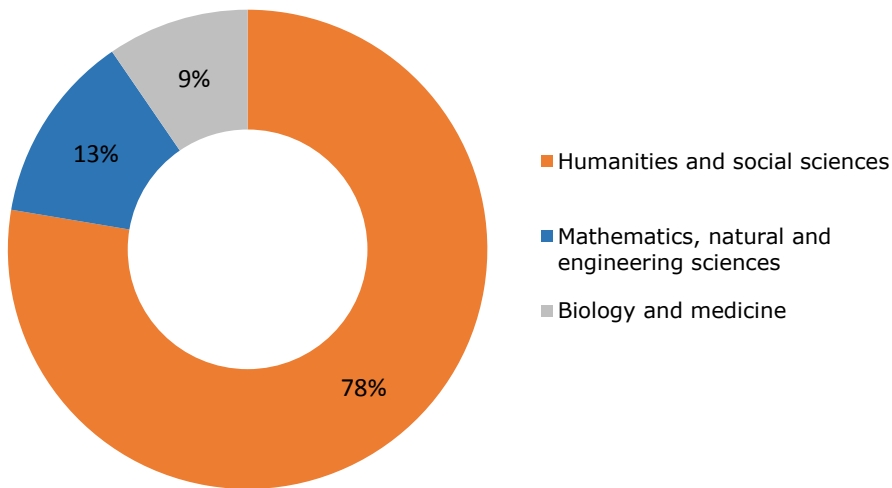


	Number	Amount
Agora	25	1.7
Scientific conferences	212	1.4
Publications	154	1.8
Pilot project OAPEN-CH	54	0.7
Publications	100	1.1
International exploratory workshops	59	0.5
Total	450	5.4

6.2 Funding by research area

Amounts in CHF million

Distribution of the approved amounts



	Betrag
Humanities and social sciences	4.2
Mathematics, natural and engineering sciences	0.7
Biology and medicine	0.5
Total	5.4