

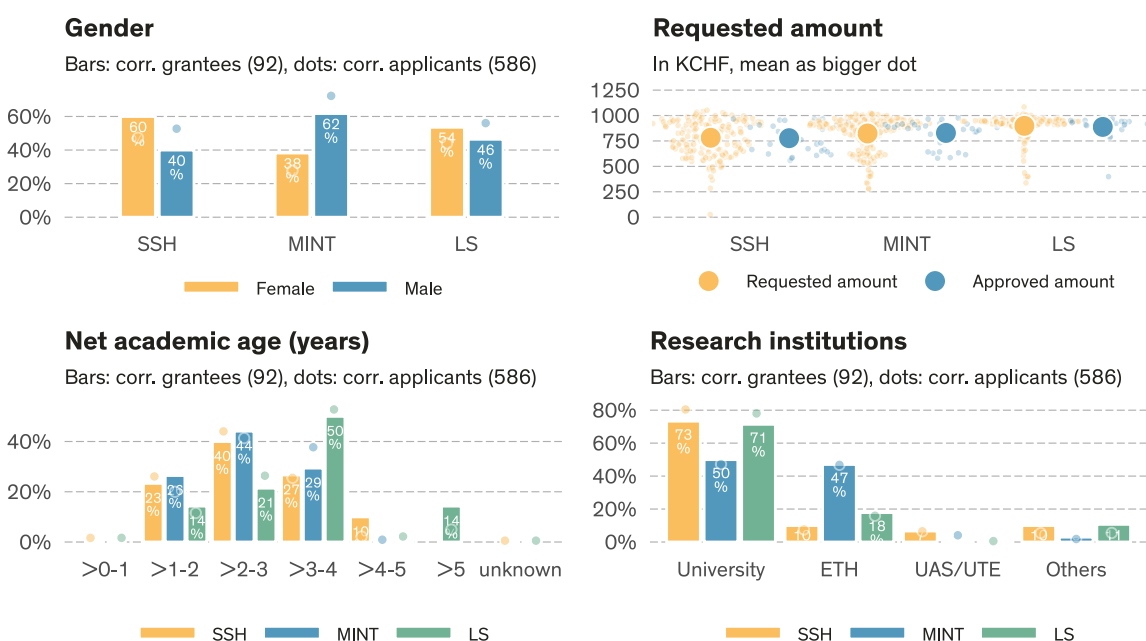
Grant summary of call deadline 2024-11-01

Ambizione

The figures include Ambizione Projektbeitrag. Data state **2025-08-29**¹.

	# Evaluated ^a	Approved	Req. amount	Appr. amount	Funding rate	Funding level	Success rate
SSH	184	30	143.8 MCHF	23.3 MCHF	16.2%	96.5%	16.3%
MINT	220	34	181.2 MCHF	28.2 MCHF	15.6%	98.9%	15.5%
LS	182	28	163.6 MCHF	24.9 MCHF	15.2%	97.7%	15.4%
Total	586	92	488.5 MCHF	76.4 MCHF	15.6%	97.7%	15.7%

^a Number of proposals minus known formal/substantive non-considerations and minus known withdrawal before rulings. All numbers and shares in this table are based on the number of evaluated proposals.



Approvals & rejections (call 2024-11-01)

	Total ^a	Evaluated ^b	Approved	Success rate	Subst. NC ^c	Formal NC ^c	NC ^c	Rej. after eval.
Overall								
Overall	595 (100.0%)	586 (98.5%)	92	15.7%	0 (0.0%)	9 (1.5%)	1.5%	494 (83.0%)
Gender (corr. applicant)								
Female	232 (100.0%)	228 (98.3%)	46	20.2%	0 (0.0%)	4 (1.7%)	1.7%	182 (78.4%)
Male	363 (100.0%)	358 (98.6%)	46	12.8%	0 (0.0%)	5 (1.4%)	1.4%	312 (86.0%)
Research area								
SSH	186 (100.0%)	184 (98.9%)	30	16.3%	0 (0.0%)	2 (1.1%)	1.1%	154 (82.8%)
MINT	226 (100.0%)	220 (97.3%)	34	15.5%	0 (0.0%)	6 (2.7%)	2.7%	186 (82.3%)
LS	183 (100.0%)	182 (99.5%)	28	15.4%	0 (0.0%)	1 (0.5%)	0.5%	154 (84.2%)

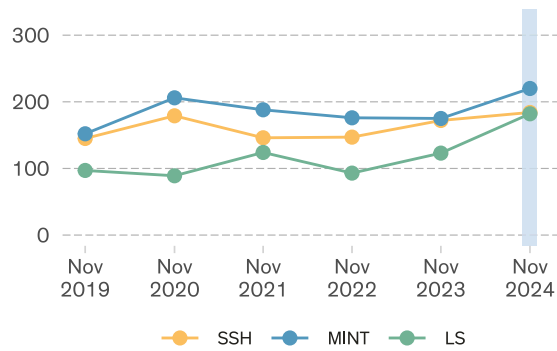
^a Total = Number of submitted proposals minus external Lead Agency and withdrawal before rulings

^b Evaluated = Total submissions minus formal and substantive non-considerations

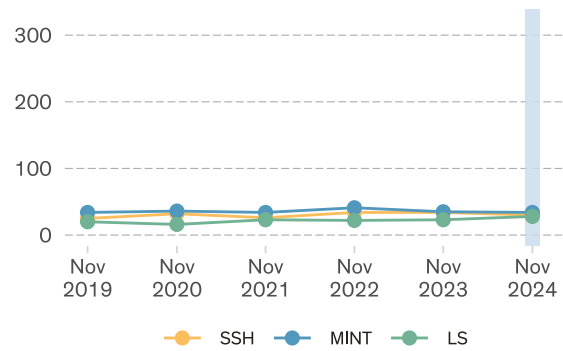
^c NC = Non-considerations

¹Calls: 'Ambizione 2024'

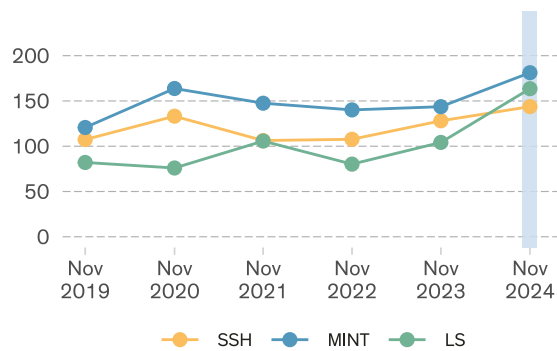
Number of proposals



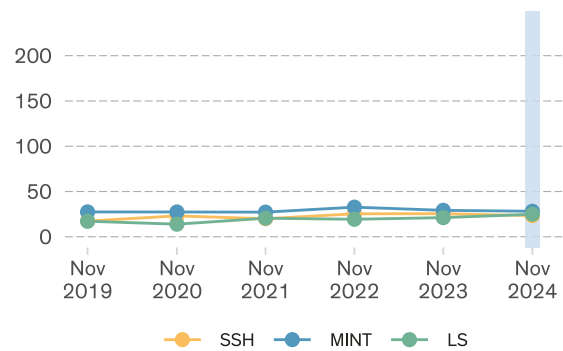
Number of grants



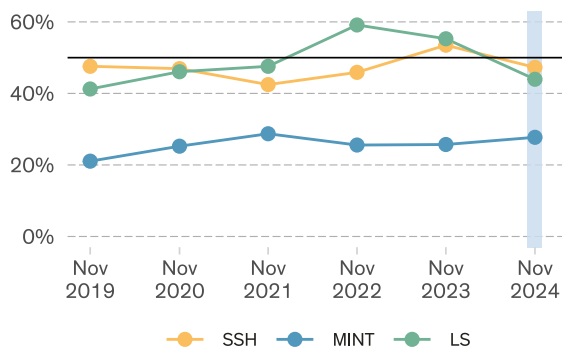
Total requested amount (MCHF)



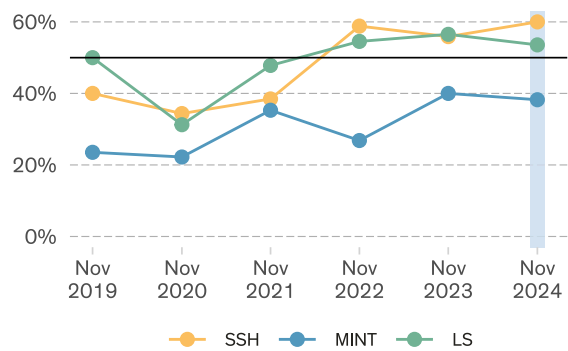
Total granted amount (MCHF)



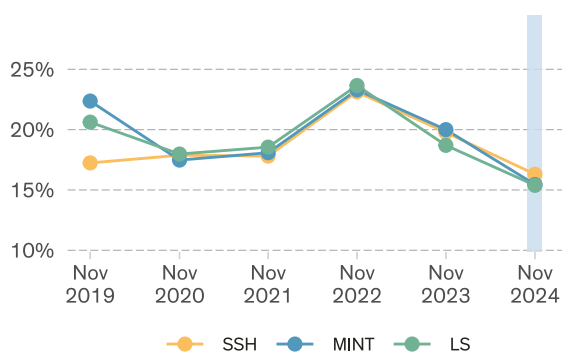
Female corr. applicants



Female corr. grantees



Success rate



Funding rate

