

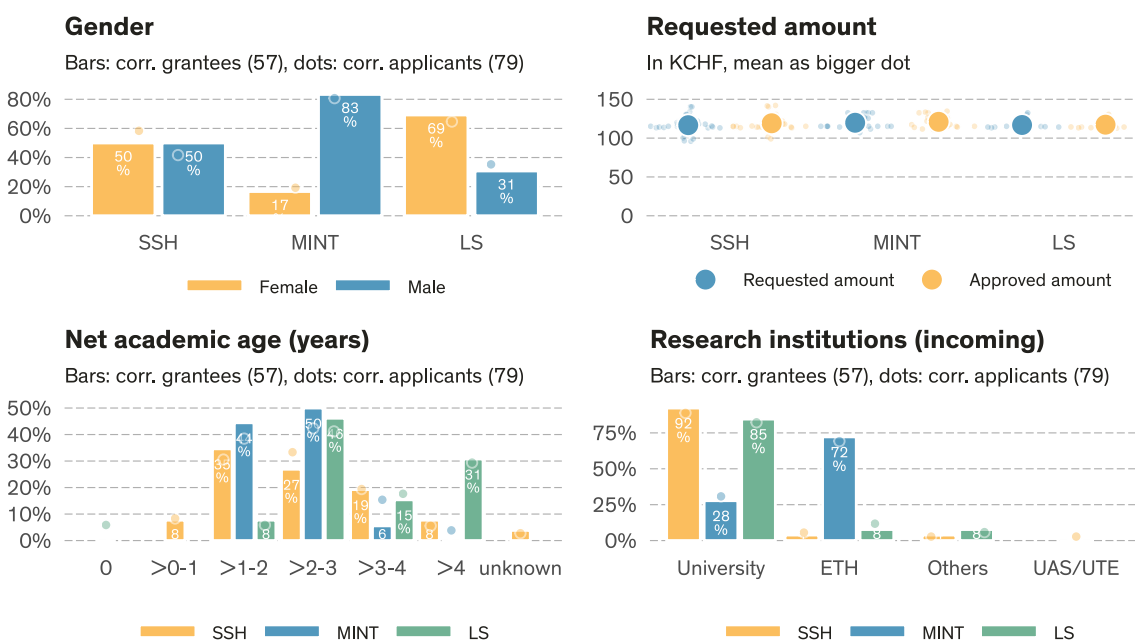
Grant summary of call deadline 2025-08-05

Return CH Postdoc.Mobility

The figures include only proposals for Return CH Postdoc.Mobility grants. The classification of research areas is based on the main discipline of the proposals. Data state **2026-01-06**¹.

	# Evaluated ^a	Approved	Req. amount	Appr. amount	Funding rate	Funding level	Success rate
SSH	36	26	4.2 MCHF	3.1 MCHF	73.7%	100.6%	72.2%
MINT	26	18	3.1 MCHF	2.2 MCHF	69.9%	100.6%	69.2%
LS	17	13	2.0 MCHF	1.5 MCHF	76.8%	101.0%	76.5%
Total	79	57	9.3 MCHF	6.8 MCHF	73.1%	100.7%	72.2%

^a Number of proposals minus known formal/substantive non-considerations and minus known withdrawal before rulings. All numbers and shares in this table are based on the number of evaluated proposals.



Approvals & rejections (call 2025-08-05)

	Total ^a	Evaluated ^b	Approved	Success rate	Subst. NC ^c	Formal NC ^c	NC ^c	Rej. after eval.
Overall								
Overall	79 (100.0%)	79 (100.0%)	57	72.2%	0 (0.0%)	0 (0.0%)	0.0%	22 (27.8%)
Gender (corr. applicant)								
Female	37 (100.0%)	37 (100.0%)	25	67.6%	0 (0.0%)	0 (0.0%)	0.0%	12 (32.4%)
Male	42 (100.0%)	42 (100.0%)	32	76.2%	0 (0.0%)	0 (0.0%)	0.0%	10 (23.8%)
Research area								
SSH	36 (100.0%)	36 (100.0%)	26	72.2%	0 (0.0%)	0 (0.0%)	0.0%	10 (27.8%)
MINT	26 (100.0%)	26 (100.0%)	18	69.2%	0 (0.0%)	0 (0.0%)	0.0%	8 (30.8%)
LS	17 (100.0%)	17 (100.0%)	13	76.5%	0 (0.0%)	0 (0.0%)	0.0%	4 (23.5%)

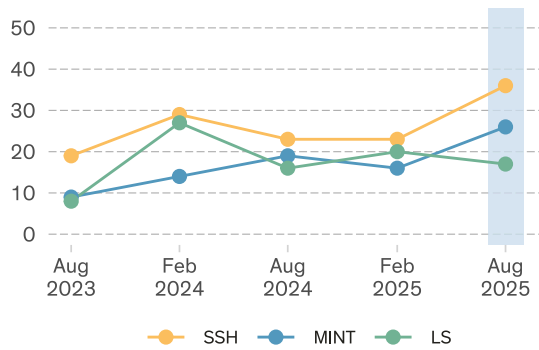
^a Total = Number of submitted proposals minus external Lead Agency and withdrawal before rulings

^b Evaluated = Total submissions minus formal and substantive non-considerations

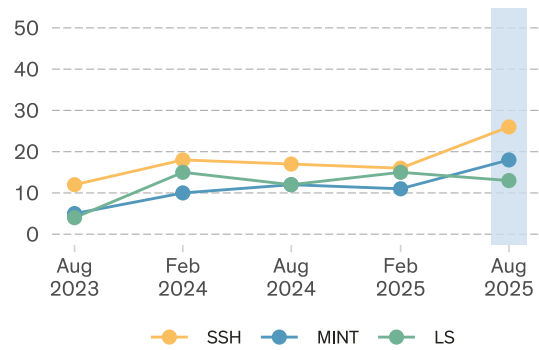
^c NC = Non-considerations

¹Calls: 'Rückkehr CH Postdoc.Mobility 2025 August'

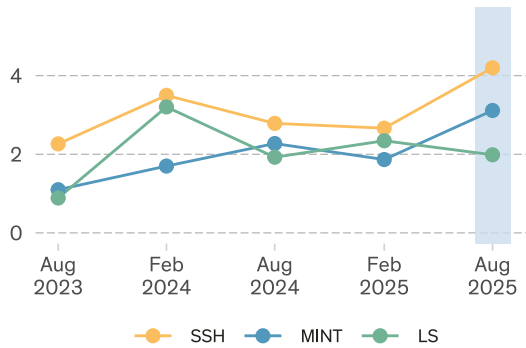
Number of proposals



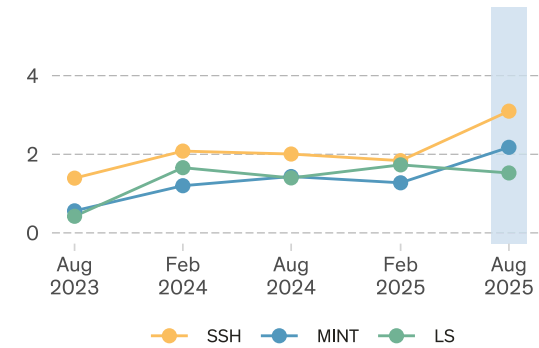
Number of grants



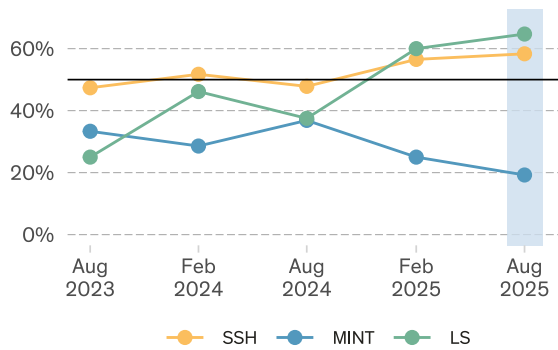
Total requested amount (MCHF)



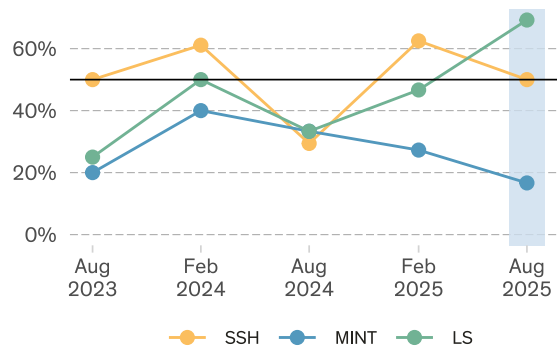
Total granted amount (MCHF)



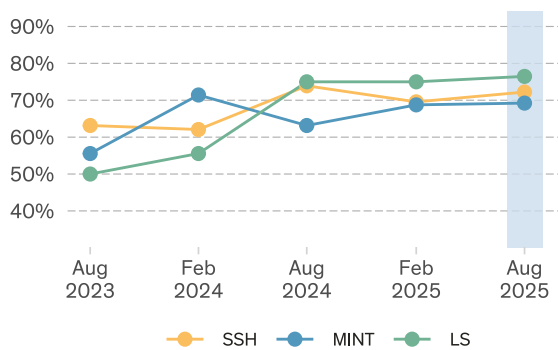
Female corr. applicants



Female corr. grantees



Success rate



Funding rate

