

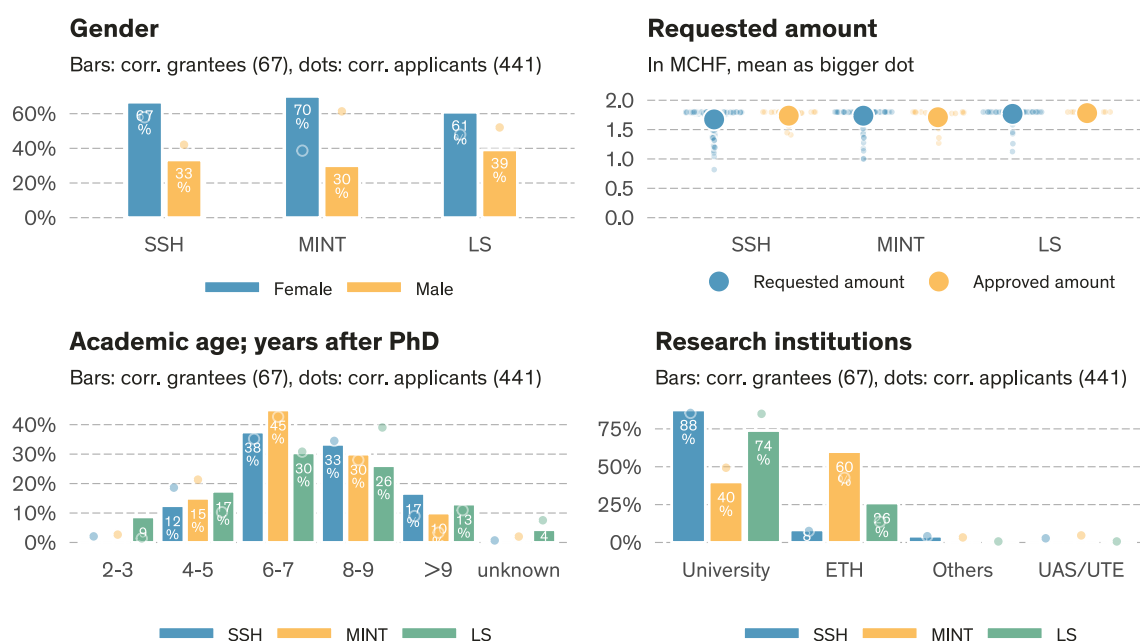
Grant summary of call deadline 2023-02-01*

SNSF Starting Grants

Data state 2023-12-19¹.

	# Evaluated ^a	Approved	Req. amount	Appr. amount	Funding rate	Funding level	Success rate
SSH	145	24	242.7 MCHF	41.7 MCHF	17.2%	99.2%	16.6%
MINT	150	20	260.5 MCHF	34.2 MCHF	13.1%	99.9%	13.3%
LS	146	23	258.1 MCHF	41.0 MCHF	15.9%	99.5%	15.8%
Total	441	67	761.3 MCHF	116.9 MCHF	15.4%	99.5%	15.2%

^a Number of proposals minus known formal/substantive non-considerations and minus known withdrawal before rulings. All numbers and shares in this table are based on the number of evaluated proposals.



Approvals & rejections (call 2023-02-01)

	Total ^a	Evaluated ^b	Approved	Success rate	Subst. NC ^c	Formal NC ^c	NC ^c	Rej. after eval.
Overall								
Overall	447 (100.0%)	441 (98.7%)	67	15.2%	0 (0.0%)	6 (1.3%)	1.3%	374 (83.7%)
Gender (corr. applicant)								
Female	215 (100.0%)	212 (98.6%)	44	20.8%	0 (0.0%)	3 (1.4%)	1.4%	168 (78.1%)
Male	232 (100.0%)	229 (98.7%)	23	10.0%	0 (0.0%)	3 (1.3%)	1.3%	206 (88.8%)
Research area								
SSH	145 (100.0%)	145 (100.0%)	24	16.6%	0 (0.0%)	0 (0.0%)	0.0%	121 (83.4%)
MINT	153 (100.0%)	150 (98.0%)	20	13.3%	0 (0.0%)	3 (2.0%)	2.0%	130 (85.0%)
LS	149 (100.0%)	146 (98.0%)	23	15.8%	0 (0.0%)	3 (2.0%)	2.0%	123 (82.6%)

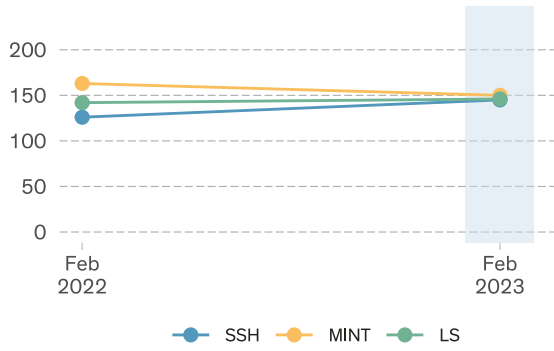
^a Total = Number of submitted proposals minus external Lead Agency and withdrawal before rulings

^b Evaluated = Total submissions minus formal and substantive non-considerations

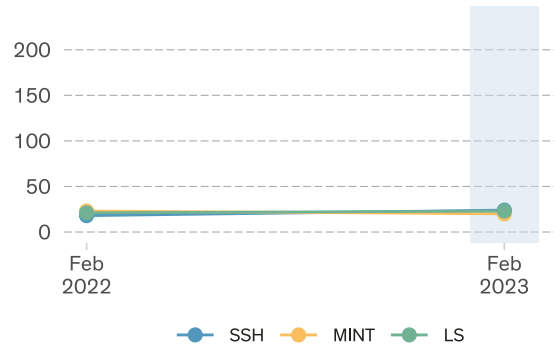
^c NC = Non-considerations

¹Calls: 'SNSF Starting Grants 2023'

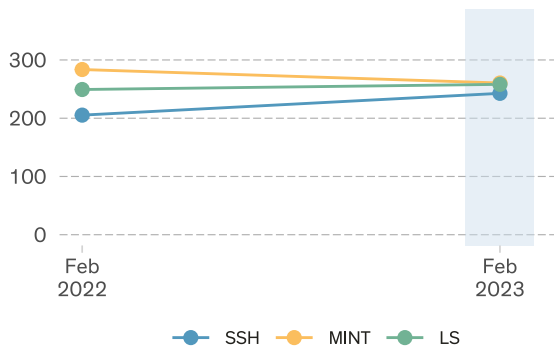
Number of proposals



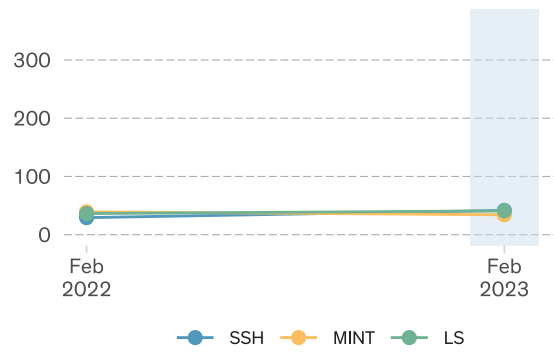
Number of grants



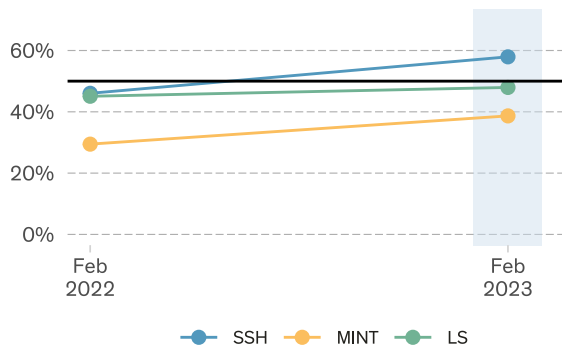
Total requested amount (MCHF)



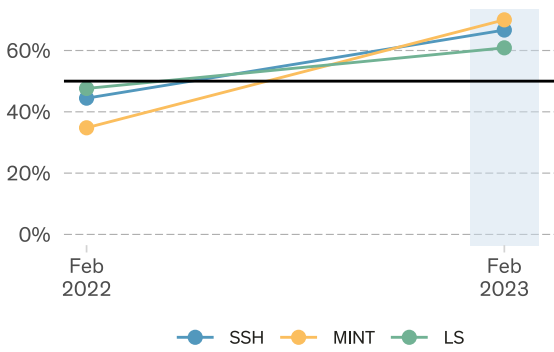
Total granted amount (MCHF)



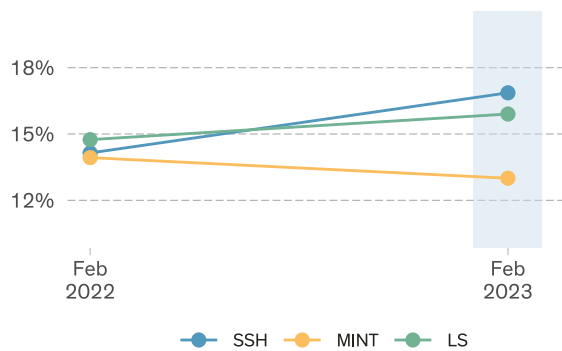
Female corr. applicants



Female corr. grantees



Success rate



Funding rate

