



# POSTDOC.MOBILITY CALL AUGUST 2024

Online Q&A Session for Researchers  
14 May 2024

Please note that this presentation is only a summary. In case of doubt, please refer to the relevant regulation published on our website.

Martina Haug, Scientific officer  
Noémie Maillard Schaffter, Scientific officer  
Ramona Rauber, Scientific officer  
Renate Zindel, Scientific officer

Franziska Marti, Grant manager  
Lenard Schmid, Grant manager  
Isabelle Walker, Grant manager  
Chloé Liechti, Communication officer

# Plan of the presentation



1. Aim, target applicants
2. Submission: how to, important documents, tips
3. Evaluation criteria
4. Q&A



- 1. Aim, target applicants**
2. Submission: how to, important documents, tips
3. Evaluation criteria
4. Q&A

# For which target group?

## Aim

- Fellowship for a research stay abroad for **postdocs** who wish to pursue a scientific or an academic career
- Allows researchers to acquire more in-depth knowledge, to increase their scientific independence and enhance their research profile
- Possibility to apply for a return CH grant after the fellowship abroad

## Eligibility criteria

- Doctorate (PhD, MD-PhD) or medical degree, or completion of the doctorate **within the next 9 months**
- Submission **up to 3 years after the doctorate**
- Medical researchers without MD- PhD: submission **up to 8 years after the state examination** and at least 3 years' clinical activity
- Employment of at least 2 years' duration at a research institution in Switzerland and Swiss permit (for applicants who are not Swiss nationals)
- Return CH grant: Ongoing Postdoc.Mobility fellowship

# Duration and budget

## Duration

- Fellowship: 12 to 24 months
- Return CH grant: 3 to 12 months

## Eligible costs

- Fellowship: grant towards living costs, flat-rate for travel expenses, child allowances (Please note: this is a scholarship, not a salary)
- Return CH grant: salary and social security contributions
- For both: contribution to research and conference costs

## Submission deadlines

**1 February and  
2 August**

**17:00:00 Swiss local time**



1. Aim, target applicants
- 2. Submission: how to, important documents, tips**
3. Evaluation criteria
4. Q&A

# How to apply

- **Submission** via [www.mySNF.ch](http://www.mySNF.ch)
- **Evaluation:**
  - Formal verification
  - Scientific assessment (quality-based criteria) by the Postdoc.Mobility evaluation panels
  - Selection in a competitive procedure
- **Decision:** about 4-5 months after submission

## 1. Personal data

#	No./Title	Status	
1.1	Responsible applicant	In preparation	
1.2	Contact person CH	In preparation	
1.3	Designated host lab / Institution	In preparation	
1.4	Contact person of designated host institute	In preparation	

## 2. Application data

#	No./Title	Status	
2.1	References	In preparation	
2.2	Reference letters	In preparation	
2.3	Basic data I	In preparation	
2.4	Basic data II	In preparation	
2.5	Use-inspired project	In preparation	
2.6	Re-submission	In preparation	
2.7	Link to other SNSF projects	In preparation	
2.8	Available or requested funds	In preparation	
2.9	Requested funding	In preparation	
2.10	Research requiring authorisation or notification	In preparation	
2.11	Diploma/PhD and extension eligibility period	In preparation	
2.12	General remarks on the project	In preparation	

## 3. Annexed documents (upload)

#	No./Title	Status	
3.1	Research plan	In preparation	
3.2	CV and major achievements	In preparation	
3.3	Statement of mobility	In preparation	
3.4	Copy diplomas	In preparation	
3.5	Confirmation host institute	In preparation	
3.6	Authorisation third party funding	In preparation	
3.7	Family register, children's certificate-s	In preparation	
3.8	Swiss passport or residence permit	In preparation	
3.9	Other annexes	In preparation	
3.10	Administrative part of the application	In preparation	

Submit grant application

# Writing a proposal: tips

- **All relevant information can be found on the SNSF website and on mySNF**  
[Postdoc.Mobility Regulations](#), [Guidelines](#) and [Checklist](#) for submitting a proposal are on our website (Homepage > Funding > Find funding scheme > Postdoc.Mobility)
- Register on mySNF as early as possible (scheme open 3 months before deadline)
- Start planning your submission **early**: deadlines are strict and non-negotiable
- Invest enough time for preparing all required documents (e.g. reference letters, confirmation host institute,...)
- You are competing with many applicants, i.e., your proposal must stand out and make a difference
- If you have questions, contact the SNSF: [pm@snf.ch](mailto:pm@snf.ch)



# Writing a proposal: research plan

- Please follow the guidelines/instructions carefully (otherwise your application will be formally rejected)
- Number of pages (8), number of characters (30'000), font size and line spacing must follow the guidelines
- Research plan should be understandable for experts (within area of research) as well as for people in the wider discipline

# Writing a proposal: CV

- New **standardized CV** introduced by the SNSF in 2022 to facilitate comparisons between applicants (more information on our website: [www.snf.ch](http://www.snf.ch) > Funding > How to > CV format)
- It describes your education, your employment history and your **major achievements** as a researcher
- It must be created via the portal: <https://portal.snf.ch/>. The generated PDF must subsequently be uploaded in your application in mySNF

# Standardised CV

## CV

Jane Test  
Current position(s): Assistant professor with tenure track or similar  
Academic age: 8 year(s) 7 month(s)

## Education

Degree	Organisation	Duration
PhD / Dr.: Psychology	Italian Institute of Technology, IT Department of Robotics, Brain and Cognitive Sciences	01.2008 - 04.2011 3 year(s) 4 month(s)
Master: Biology	Sorbonne University, FR Department of Psychology	10.2005 - 07.2007 1 year(s) 10 month(s)
Bachelor: Psychology	Ludwig-Maximilians-Universität München, DE Department of Psychology	10.2002 - 07.2005 2 year(s) 10 month(s)

## Employment

Role	Organisation	Duration
Assistant professor with tenure track or similar	Universität Bern – BE, CH School of Health Sciences	09.2019 - Present 2 year(s) 10 month(s)
Senior researcher	Universität Zürich - ZH, CH Department of Neuroscience	03.2016 - 08.2019 3 year(s) 6 month(s)
Junior researcher / Postdoc	University of Wisconsin–Madison, US Center for Neuroprosthetics	10.2013 - 03.2016 2 year(s) 6 month(s)

Role	Organisation	Duration
Junior researcher / Postdoc	ETH Zurich, CH Institute for Neuroscience	05.2011 - 10.2013 2 year(s) 6 month(s)

## Major achievements

### Achievement 1

Lorem ipsum dolor sit amet, consectetur adipiscing elit, sed do eiusmod tempor incididunt ut labore et dolore magna aliqua. Ullamcorper a lacus vestibulum sed arcu non odio euismod. Ipsum dolor sit amet consectetur adipiscing. Eu nisi nunc mi ipsum faucibus vitae aliquet. Consectetur adipiscing elit ut aliquam purus sit. Tempus quam pellentesque nec nam aliquam sem et. Ullamcorper eget nulla facilisi etiam dignissim diam quis enim lobortis. Quisque egestas diam in arcu cursus euismod [1, 2]. Vestibulum mattis ullamcorper velit sed. Congue eu consequat ac felis donec. Lorem ipsum dolor sit amet, consectetur adipiscing elit, sed do eiusmod tempor incididunt ut labore et dolore magna aliqua. Ullamcorper a lacus vestibulum sed arcu non odio euismod. Ipsum dolor sit amet consectetur adipiscing. Eu nisi nunc mi ipsum faucibus vitae aliquet. Consectetur adipiscing elit ut aliquam purus sit. Tempus quam pellentesque nec nam aliquam sem et. Ullamcorper eget nulla facilisi etiam dignissim diam quis enim lobortis. Quisque egestas diam in arcu cursus euismod. Vestibulum mattis ullamcorper velit sed. Congue eu consequat ac felis donec. Lorem ipsum dolor sit amet, consectetur adipiscing elit, sed do eiusmod tempor incididunt ut labore et dolore magna aliqua. Ullamcorper a lacus vestibulum sed arcu non odio euismod. Ipsum dolor sit amet consectetur adipiscing. Eu nisi nunc mi ipsum faucibus vitae aliquet. Consectetur adipiscing elit ut aliquam purus sit. Tempus quam pellentesque nec nam aliquam sem et. Ullamcorper eget nulla facilisi etiam dignissim diam quis enim lobortis. Quisque egestas diam in arcu cursus euismod. Vestibulum mattis ullamcorper velit sed. Congue eu consequat ac felis donec [3, 4].

- [1] journal-article. Carberry, J. (2012). A Methodology for the Emulation of Architecture. *Journal of Psychoeramics*, 5(11), 1–3. <https://doi.org/10.5555/12945983> [DOI](#)
- [2] journal-article. Carberry, J. (2011). The Impact of Interactive Epistemologies on Cryptography. *Journal of Psychoeramics*, 8(11), 1–3. <https://doi.org/10.5555/96794321> [DOI](#)
- [3] journal-article. Adin, D., Freeman, L., Stepien, R., Rush, J. E., Tjostheim, S., Kellihan, H., Aheme, M., Vereb, M., & Goldberg, R. (2021). Effect of type of diet on blood and plasma laurine concentrations, cardiac biomarkers, and echocardiograms in 4 dog breeds. *Journal of Veterinary Internal Medicine*, 35(2), 771–779. <https://doi.org/10.1111/jvim.10075> [DOI](#)
- [4] journal-article. Sannino, C., Cannone, N., D'Alò, F., Franzetti, A., Gandolfi, I., Pittino, F., Turbetti, B., Mezzasoma, A., Zucconi, L., Buzzini, P., Guglielmin, M., & Onofri, S. (2022). Fungal communities in European alpine soils are not affected by short-term less/greater in situ simulated warming than bacterial communities. *Environmental Microbiology*. <https://doi.org/10.1111/1462-2920.16000> [DOI](#)

### Achievement 2

Lorem ipsum dolor sit amet, consectetur adipiscing elit, sed do eiusmod tempor incididunt ut labore et dolore magna aliqua. Ullamcorper a lacus vestibulum sed arcu non odio euismod. Ipsum dolor sit amet consectetur adipiscing. Eu nisi nunc mi ipsum faucibus vitae aliquet. Consectetur adipiscing elit ut aliquam purus sit. Tempus quam pellentesque nec nam aliquam sem et. Ullamcorper eget nulla facilisi etiam dignissim diam quis enim lobortis. Quisque egestas diam in arcu cursus euismod. Vestibulum mattis ullamcorper velit sed. Congue eu consequat ac felis donec [1, 2].

- [1] book-chapter. Bassolino M., Serino A. Representation and perception of the body in space. (2021). In: Della Sala, S. (Ed.) *Encyclopedia of Behavioral Neuroscience*, vol. 2. Elsevier, pp. 640–656. [DOI](#)
- [2] journal-article. Kastner, M., Wilczynski, N. L., McKibbin, A. K., Garg, A. X., & Haynes, R. B. (2009). Diagnostic test systematic reviews: bibliographic search filters ("Clinical Queries") for diagnostic accuracy studies perform well. *Journal of Clinical Epidemiology*, 62(9), 974–981. <https://doi.org/10.1016/j.jclinepi.2008.11.008> [DOI](#)

### Achievement 3

Lorem ipsum dolor sit amet, consectetur adipiscing elit, sed do eiusmod tempor incididunt ut labore et dolore magna aliqua. Ullamcorper a lacus vestibulum sed arcu non odio euismod. Ipsum dolor sit amet consectetur adipiscing. Eu nisi nunc mi ipsum faucibus vitae aliquet. Consectetur adipiscing elit ut aliquam purus sit. Tempus quam pellentesque nec nam aliquam sem et. Ullamcorper eget nulla facilisi etiam dignissim diam quis enim lobortis. Quisque egestas diam in arcu cursus euismod. Vestibulum mattis ullamcorper velit sed. Congue eu consequat ac felis donec. Lorem ipsum dolor sit amet, consectetur adipiscing elit, sed do eiusmod tempor incididunt ut labore et dolore magna aliqua. Ullamcorper a lacus vestibulum sed arcu non odio euismod. Ipsum dolor sit amet consectetur adipiscing. Eu nisi nunc mi ipsum faucibus vitae aliquet [1]. Consectetur adipiscing elit ut aliquam purus sit. Tempus quam pellentesque nec nam aliquam sem et. Ullamcorper eget nulla facilisi etiam dignissim diam quis enim lobortis. Quisque egestas diam in arcu cursus euismod. Vestibulum mattis ullamcorper velit sed. Congue eu consequat ac felis donec. Lorem ipsum dolor sit amet, consectetur adipiscing elit, sed do eiusmod tempor incididunt ut labore et dolore magna aliqua. Ullamcorper a lacus vestibulum sed arcu non odio euismod. Ipsum dolor sit amet consectetur adipiscing. Eu nisi nunc mi ipsum faucibus vitae aliquet. Consectetur adipiscing elit ut aliquam purus sit. Tempus quam pellentesque nec nam aliquam sem et. Ullamcorper eget nulla facilisi etiam dignissim diam quis enim lobortis. Quisque egestas diam in arcu cursus euismod. Vestibulum mattis ullamcorper velit sed. Congue eu consequat ac felis donec.

- [1] journal-article. Sannino, C., Cannone, N., D'Alò, F., Franzetti, A., Gandolfi, I., Pittino, F., Turbetti, B., Mezzasoma, A., Zucconi, L., Buzzini, P., Guglielmin, M., & Onofri, S. (2022). Fungal communities in European alpine soils are not affected by short-term less/greater in situ simulated warming than bacterial communities. *Environmental Microbiology*. <https://doi.org/10.1111/1462-2920.16000> [DOI](#)



1. Aim, target applicants
2. Submission: how to, important documents, tips
- 3. Evaluation criteria**
4. Q&A

# Evaluation criteria

## Applicant

- Scientific research output to date (quality) of the applicant relative to the net academic age
- Expertise with regard to the proposed project
- Mobility (past and future)

## Project

- Scientific relevance, quality, originality and topicality
- Suitability of approach, methodology and feasibility

## Host institution

- Scientific support, suitability and added value regarding the proposed project
- Suitability to ensure and promote the applicant's independence, intellectual development and continuing education

Around **40 - 50%** of submitted applications are approved for funding

# Possible reasons for rejection (examples)

- Lack of details with regard to the **evaluation criteria**
- Not clearly demonstrated **experience** or **expertise** in the field of the project
- Quality of **research output** not clear, not convincing
- Unclear or missing **own contribution** to the project
- **Aims, research questions** or **hypotheses** unclear or not well defined
- Lack of **coherence**, lack of **focus**
- Missing **references** to sources, archives, literature or competitors
- **Theoretical framework** is not clear
- Not enough details about the **experimental approaches**
- Unclear, outdated or inappropriate, or insufficiently developed **methods** (inc. data collection)
- Overambitious, **feasibility** not clearly given
- No **backup plan**

# If you are not successful...

## **First...**

- Read carefully the decision letter
- If you have questions, ask the SNSF Administrative Office for clarifications

## **If you are thinking of resubmitting,...**

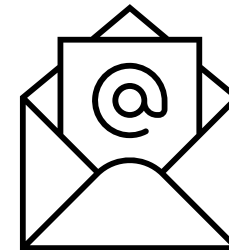
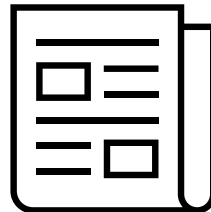
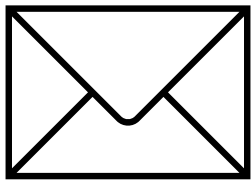
- Check if you still fulfil all formal requirements for the same funding scheme
- Consider the points criticised by the evaluation panel
- List and explain your revisions made in the point-by-point response

## **If you strongly disagree with the decision,...**

- You can ask for reconsideration or appeal against the decision

# If you are successful...

- Read carefully the decision letter (conditions etc.)
- For administrative questions, see our [Information set Postdoc.Mobility](#) and our FAQ on the website
- For individual questions where you cannot find information: contact us!





# Changes relative to the last calls

- **No career plan**
- **No cover letter**
- **Change in eligibility rule for non-Swiss citizens:** The Swiss permit should either be valid at the submission deadline (1 February or 2 August) or should have expired no more than 6 months before the submission deadline. Please note that a permit expires on notice of departure abroad or on the expiry of the term of validity of the permit

# Contact information

E-mail: [pm@snf.ch](mailto:pm@snf.ch)

Phone: **+41 31 308 22 22**

Scientific office  
Grant management

## SSH-H

Nadine Bircher  
Isabelle Walker

## MINT-N

Noélie Maillard Schaffter  
Ursula Zoss

## LS-B

Renate Zindel  
Stjepan Krnjic

## SSH-S

Zoé Codeluppi  
Franziska Marti

## MINT-T

Ramona Rauber  
Simone Ehram

## LS-M

Martina Haug  
Lenard Schmid

# Thank you!

 **Facebook.com/snf.fns.snsf.ch**

 **Youtube.com/SNSFinfo**

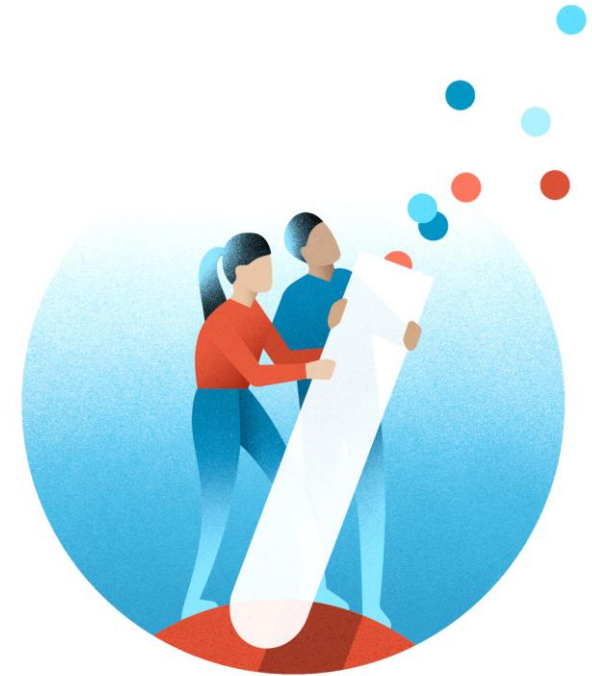
 **Instagram.com/swissnationalsciencefoundation**

 **Linkedin.com/company/snsf**

 **Twitter.com/snsf\_ch**

Check out our website: <https://www.snf.ch/en>

Visit the SNSF Data Portal: [data.snf.ch](https://data.snf.ch)!





1. Aim, target applicants
2. Submission: how to, important documents, tips
3. Evaluation criteria
- 4. Q&A**