

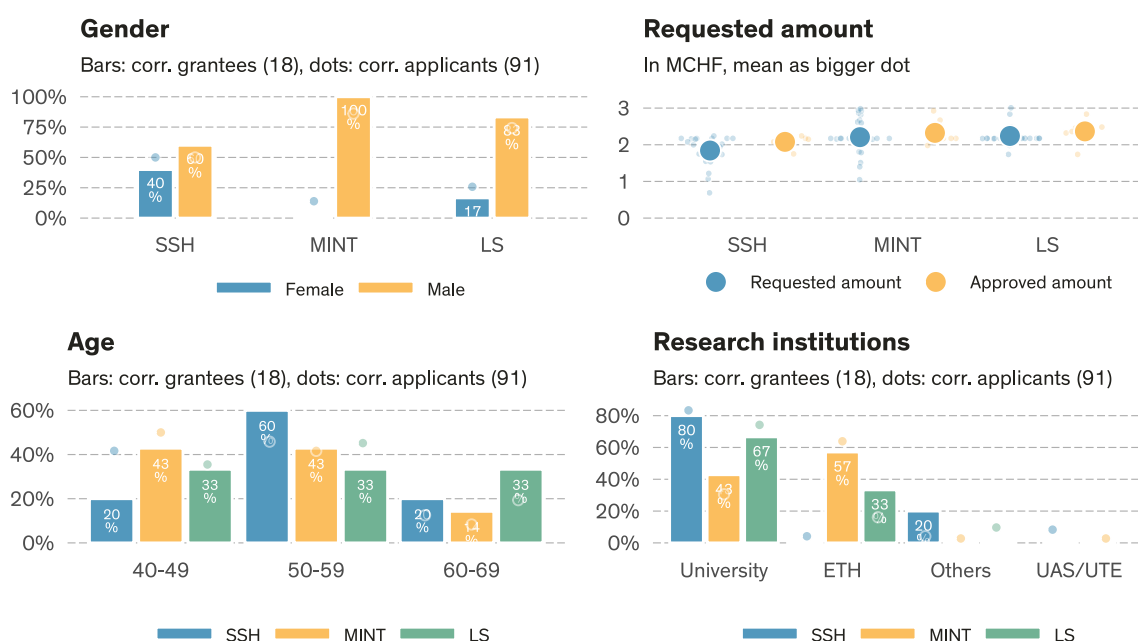
Grant summary of call deadline 2022-11-02

SNSF Advanced Grants

Data state **2023-08-03**¹.

	# Evaluated ^a	Approved	Req. amount	Appr. amount	Funding rate	Funding level	Success rate
SSH	24	5	44.2 MCHF	10.4 MCHF	23.5%	100.0%	20.8%
MINT	36	7	79.5 MCHF	16.3 MCHF	20.5%	100.0%	19.4%
LS	31	6	69.4 MCHF	14.2 MCHF	20.4%	100.0%	19.4%
Total	91	18	193.1 MCHF	40.9 MCHF	21.2%	100.0%	19.8%

^a Number of proposals minus known formal/substantive non-considerations and minus known withdrawal before rulings. All numbers and shares in this table are based on the number of evaluated proposals.



Approvals & rejections (call 2022-11-02)

	Total ^a	Evaluated ^b	Approved	Success rate	Subst. NC ^c	Formal NC ^c	NC ^c	Rej. after eval.
Overall								
Overall	92 (100.0%)	91 (98.9%)	18	19.8%	0 (0.0%)	1 (1.1%)	1.1%	73 (79.3%)
Gender (corr. applicant)								
Female	25 (100.0%)	25 (100.0%)	3	12.0%	0 (0.0%)	0 (0.0%)	0.0%	22 (88.0%)
Male	67 (100.0%)	66 (98.5%)	15	22.7%	0 (0.0%)	1 (1.5%)	1.5%	51 (76.1%)
Research area								
SSH	24 (100.0%)	24 (100.0%)	5	20.8%	0 (0.0%)	0 (0.0%)	0.0%	19 (79.2%)
MINT	37 (100.0%)	36 (97.3%)	7	19.4%	0 (0.0%)	1 (2.7%)	2.7%	29 (78.4%)
LS	31 (100.0%)	31 (100.0%)	6	19.4%	0 (0.0%)	0 (0.0%)	0.0%	25 (80.6%)

^a Total = Number of submitted proposals minus external Lead Agency and withdrawal before rulings

^b Evaluated = Total submissions minus formal and substantive non-considerations

^c NC = Non-considerations

¹Calls: 'SNSF Advanced Grants 2022'

