

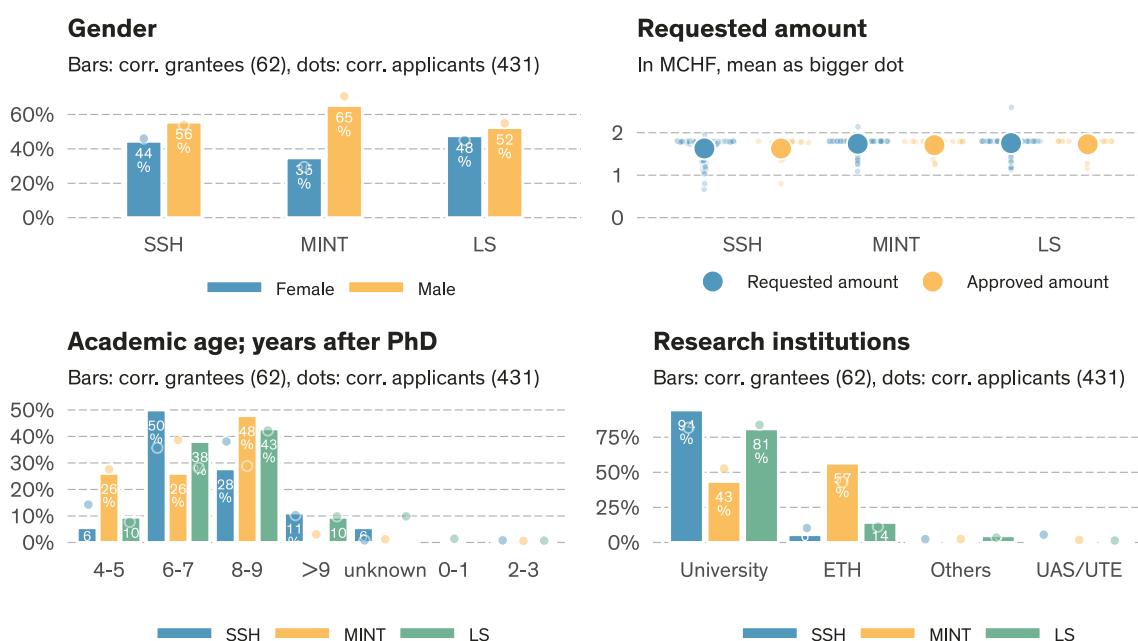
Grant summary of call deadline 2022-02-01*

SNSF Starting Grants

Data state 2023-04-27¹.

	# Evaluated ^a	Approved	Req. amount	Appr. amount	Funding rate	Funding level	Success rate
SSH	126	18	205.3 MCHF	29.3 MCHF	14.3%	99.3%	14.3%
MINT	163	23	283.6 MCHF	39.3 MCHF	13.8%	99.8%	14.1%
LS	142	21	249.3 MCHF	36.3 MCHF	14.6%	97.6%	14.8%
Total	431	62	738.2 MCHF	104.9 MCHF	14.2%	98.9%	14.4%

^a Number of proposals minus known formal/substantive non-considerations and minus known withdrawal before rulings. All numbers and shares in this table are based on the number of evaluated proposals.



Approvals & rejections (call 2022-02-01)

	Total ^a	Evaluated ^b	Approved	Success rate	Subst. NC ^c	Formal NC ^c	NC ^c	Rej. after eval.
Overall								
Overall	439 (100.0%)	431 (98.2%)	62	14.4%	1 (0.2%)	7 (1.6%)	1.8%	369 (84.1%)
Gender (corr. applicant)								
Female	173 (100.0%)	170 (98.3%)	26	15.3%	0 (0.0%)	3 (1.7%)	1.7%	144 (83.2%)
Male	266 (100.0%)	261 (98.1%)	36	13.8%	1 (0.4%)	4 (1.5%)	1.9%	225 (84.6%)
Research area								
SSH	128 (100.0%)	126 (98.4%)	18	14.3%	1 (0.8%)	1 (0.8%)	1.6%	108 (84.4%)
MINT	163 (100.0%)	163 (100.0%)	23	14.1%	0 (0.0%)	0 (0.0%)	0.0%	140 (85.9%)
LS	148 (100.0%)	142 (95.9%)	21	14.8%	0 (0.0%)	6 (4.1%)	4.1%	121 (81.8%)

^a Total = Number of submitted proposals minus external Lead Agency and withdrawal before rulings

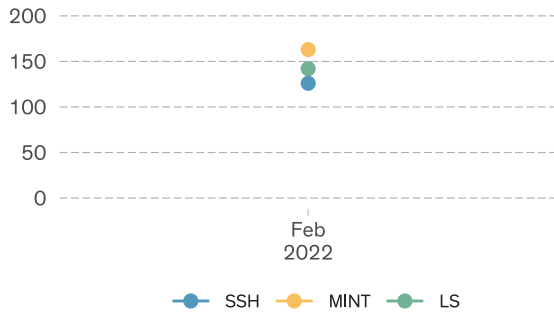
^b Evaluated = Total submissions minus formal and substantive non-considerations

^c NC = Non-considerations

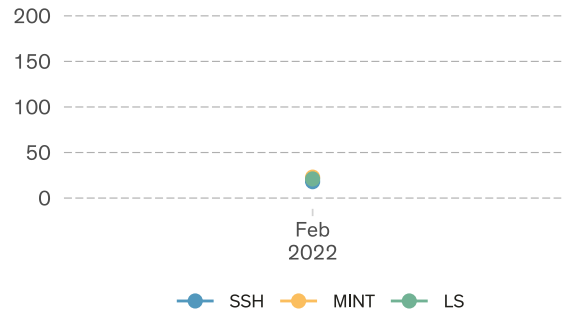
*Report generated automatically, it might contain errors.

¹Calls: 'SNSF Starting Grants 2022'

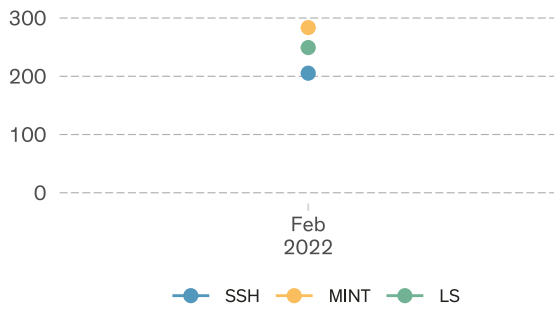
Number of proposals



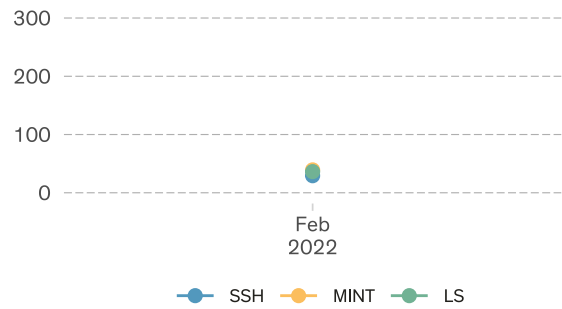
Number of grants



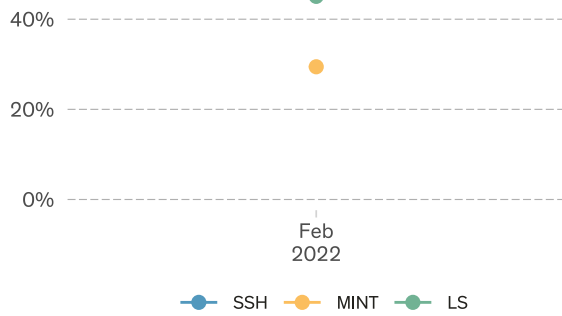
Total requested amount (MCHF)



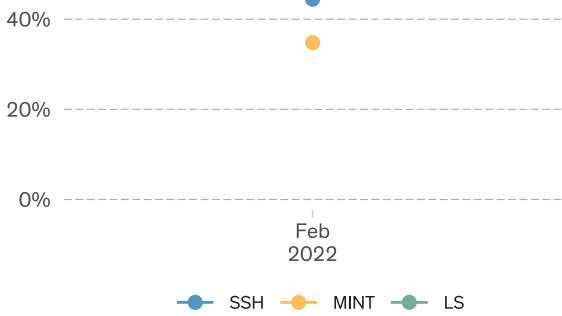
Total granted amount (MCHF)



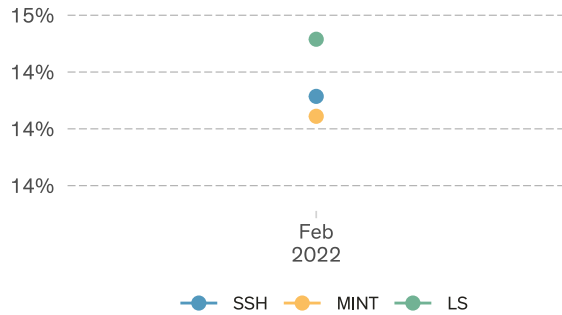
Female corr. applicants



Female corr. grantees



Success rate



Funding rate

