

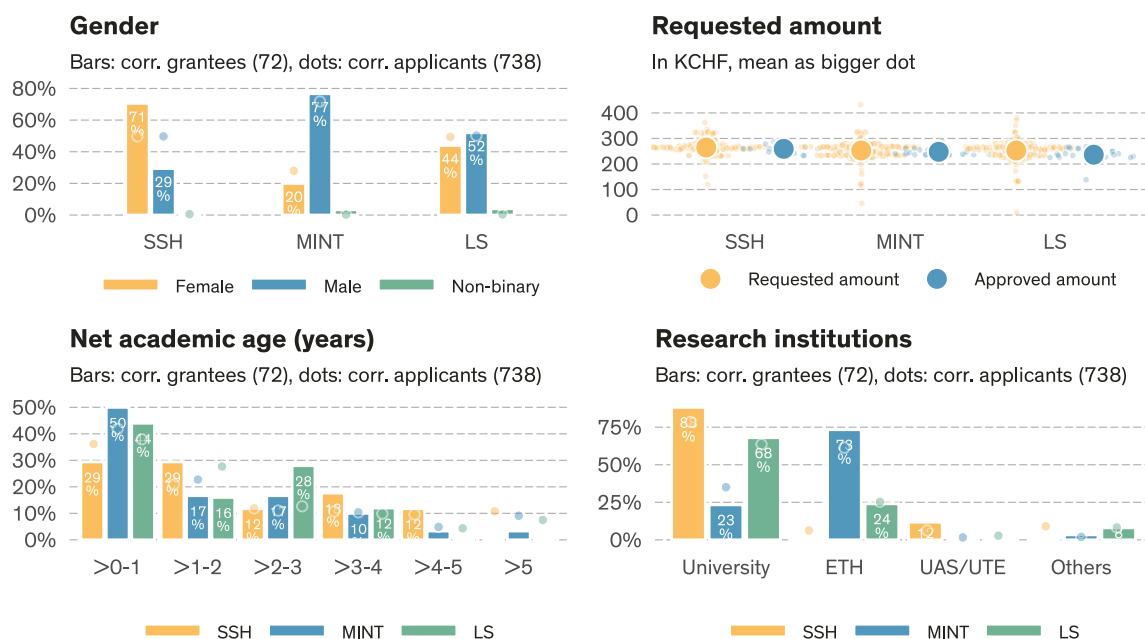
## Grant summary of call deadline 2024-12-02

# SNSF Swiss Postdoctoral Fellowships

Data state **2025-08-29**<sup>1</sup>.

	# Evaluated <sup>a</sup>	Approved	Req. amount	Appr. amount	Funding rate	Funding level	Success rate
SSH	177	17	46.8 MCHF	4.4 MCHF	9.4%	97.3%	9.6%
MINT	308	30	77.9 MCHF	7.4 MCHF	9.5%	97.5%	9.7%
LS	253	25	64.0 MCHF	5.9 MCHF	9.6%	95.1%	9.9%
<b>Total</b>	<b>738</b>	<b>72</b>	<b>188.7 MCHF</b>	<b>17.8 MCHF</b>	<b>9.4%</b>	<b>96.6%</b>	<b>9.8%</b>

<sup>a</sup> Number of proposals minus known formal/substantive non-considerations and minus known withdrawal before rulings. All numbers and shares in this table are based on the number of evaluated proposals.



## Approvals & rejections (call 2024-12-02)

	Total <sup>a</sup>	Evaluated <sup>b</sup>	Approved	Success rate	Subst. NC <sup>c</sup>	Formal NC <sup>c</sup>	NC <sup>c</sup>	Rej. after eval.
<b>Overall</b>								
Overall	780 (100.0%)	738 (94.6%)	72	9.8%	1 (0.1%)	41 ( 5.3%)	5.4%	666 (85.4%)
<b>Gender (corr. applicant)</b>								
Female	317 (100.0%)	299 (94.3%)	29	9.7%	0 (0.0%)	18 ( 5.7%)	5.7%	270 (85.2%)
Male	459 (100.0%)	436 (95.0%)	41	9.4%	1 (0.2%)	22 ( 4.8%)	5.0%	395 (86.1%)
Non-binary	4 (100.0%)	3 (75.0%)	2	66.7%	0 (0.0%)	1 (25.0%)	25.0%	1 (25.0%)
<b>Research area</b>								
SSH	191 (100.0%)	177 (92.7%)	17	9.6%	0 (0.0%)	14 ( 7.3%)	7.3%	160 (83.8%)
MINT	322 (100.0%)	308 (95.7%)	30	9.7%	1 (0.3%)	13 ( 4.0%)	4.3%	278 (86.3%)
LS	267 (100.0%)	253 (94.8%)	25	9.9%	0 (0.0%)	14 ( 5.2%)	5.2%	228 (85.4%)

<sup>a</sup> Total = Number of submitted proposals minus external Lead Agency and withdrawal before rulings

<sup>b</sup> Evaluated = Total submissions minus formal and substantive non-considerations

<sup>c</sup> NC = Non-considerations

<sup>1</sup>Calls: 'SNSF Swiss Postdoctoral Fellowships 2024'

