

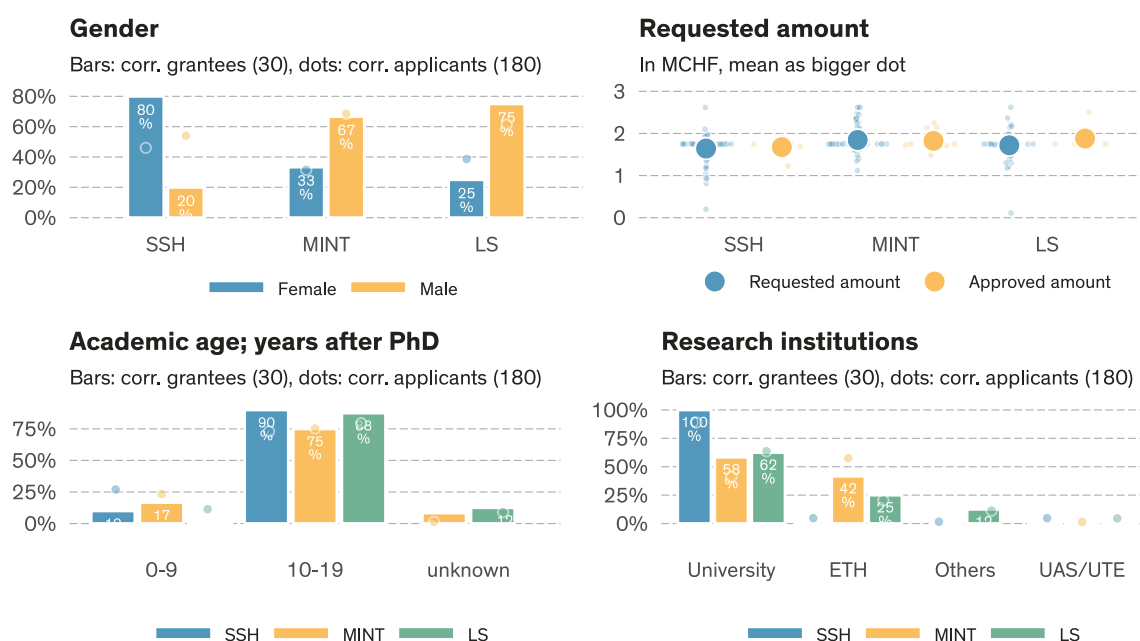
Grant summary of call deadline 2022-06-01

SNSF Consolidator Grants

Data state **2023-01-27**¹.

	# Evaluated ^a	Approved	Req. amount	Appr. amount	Funding rate	Funding level	Success rate
SSH	63	10	103.4 MCHF	16.8 MCHF	16.2%	100.0%	15.9%
MINT	73	12	134.7 MCHF	21.9 MCHF	16.2%	99.6%	16.4%
LS	44	8	75.7 MCHF	15.0 MCHF	19.9%	99.4%	18.2%
Total	180	30	313.8 MCHF	53.7 MCHF	17.1%	99.7%	16.7%

^a Number of proposals minus known formal/substantive non-considerations and minus known withdrawal before rulings. All numbers and shares in this table are based on the number of evaluated proposals.



Approvals & rejections (call 2022-06-01)

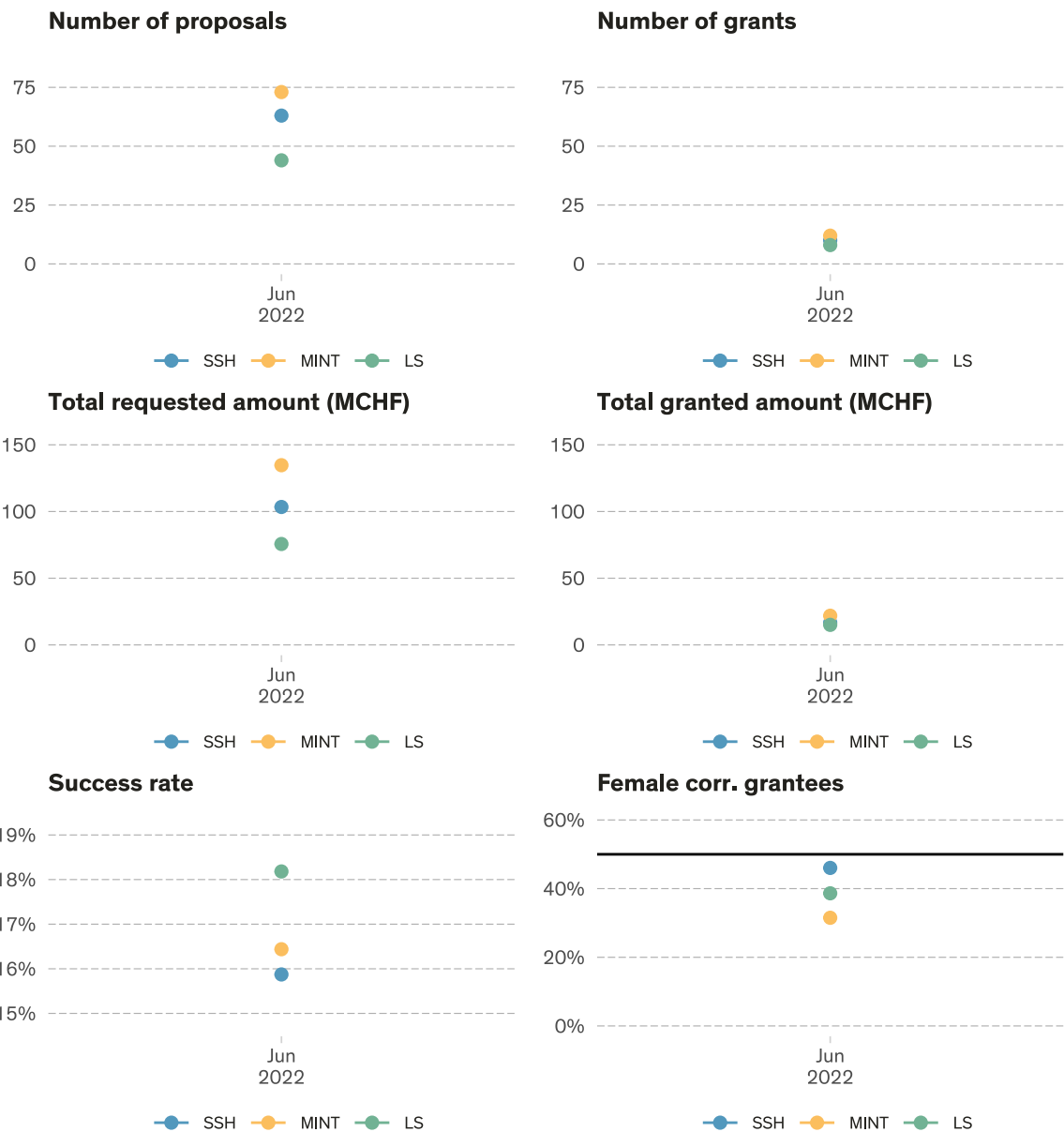
	Total ^a	Evaluated ^b	Approved	Success rate	Subst. NC ^c	Formal NC ^c	NC ^c	Rej. after eval.
Overall								
Overall	181 (100.0%)	180 (99.4%)	30	16.7%	0 (0.0%)	1 (0.6%)	0.6%	150 (82.9%)
Gender (corr. applicant)								
Female	69 (100.0%)	69 (100.0%)	14	20.3%	0 (0.0%)	0 (0.0%)	0.0%	55 (79.7%)
Male	112 (100.0%)	111 (99.1%)	16	14.4%	0 (0.0%)	1 (0.9%)	0.9%	95 (84.8%)
Research area								
SSH	64 (100.0%)	63 (98.4%)	10	15.9%	0 (0.0%)	1 (1.6%)	1.6%	53 (82.8%)
MINT	73 (100.0%)	73 (100.0%)	12	16.4%	0 (0.0%)	0 (0.0%)	0.0%	61 (83.6%)
LS	44 (100.0%)	44 (100.0%)	8	18.2%	0 (0.0%)	0 (0.0%)	0.0%	36 (81.8%)

^a Total = Number of submitted proposals minus external Lead Agency and withdrawal before rulings

^b Evaluated = Total submissions minus formal and substantive non-considerations

^c NC = Non-considerations

¹Calls: 'SNSF Consolidator Grants 2022'



Figures by call

Call deadline	# Evaluated ^a	Approved	Req. amount	Appr. amount	Funding rate	Funding level	Success rate
2022-06-01	180	30	313.8 MCHF	53.7 MCHF	17.1%	99.7%	16.7%

^a Number of proposals minus known formal/substantive non-considerations and minus known withdrawal before rulings. All numbers and shares in this table are based on the number of evaluated proposals.