

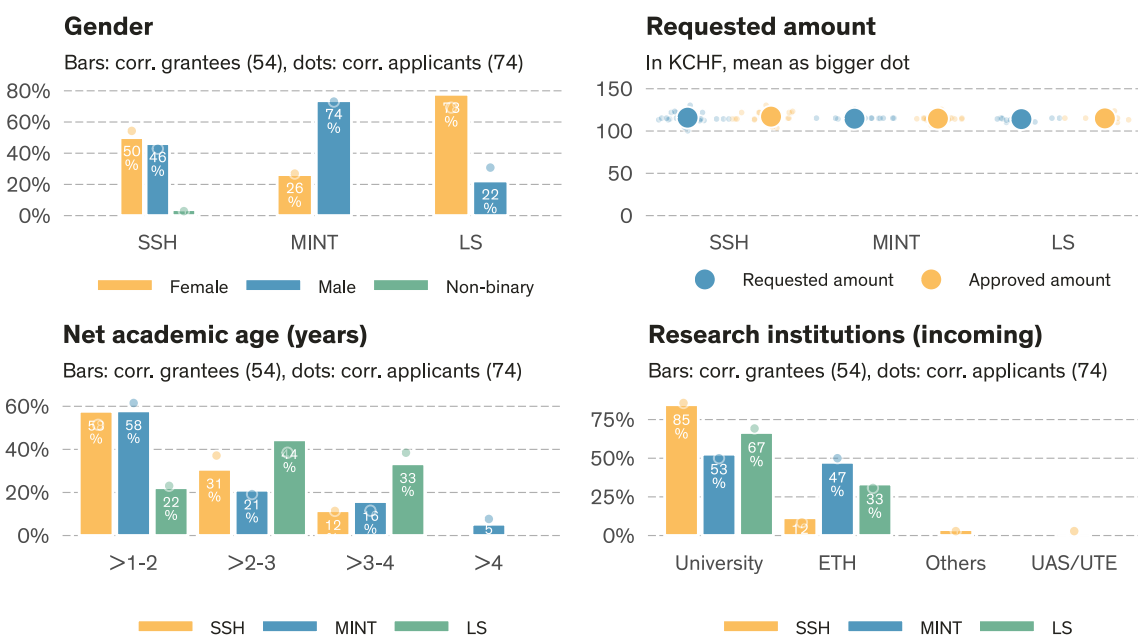
## Grant summary of call deadline 2026-02-03

# Return CH Postdoc.Mobility

The figures include only proposals for Return CH Postdoc.Mobility grants. The classification of research areas is based on the main discipline of the proposals. Data state **2026-06-15**<sup>1</sup>.

	# Evaluated <sup>a</sup>	Approved	Req. amount	Appr. amount	Funding rate	Funding level	Success rate
SSH	35	26	4.1 MCHF	3.0 MCHF	75.1%	100.4%	74.3%
MINT	26	19	3.0 MCHF	2.2 MCHF	73.2%	100.0%	73.1%
LS	13	9	1.5 MCHF	1.0 MCHF	69.8%	100.0%	69.2%
<b>Total</b>	<b>74</b>	<b>54</b>	<b>8.5 MCHF</b>	<b>6.3 MCHF</b>	<b>73.5%</b>	<b>100.2%</b>	<b>73.0%</b>

<sup>a</sup> Number of proposals minus known formal/substantive non-considerations and minus known withdrawal before rulings. All numbers and shares in this table are based on the number of evaluated proposals.



## Approvals & rejections (call 2026-02-03)

	Total <sup>a</sup>	Evaluated <sup>b</sup>	Approved	Success rate	Subst. NC <sup>c</sup>	Formal NC <sup>c</sup>	NC <sup>c</sup>	Rej. after eval.
<b>Overall</b>								
Overall	75 (100.0%)	74 (98.7%)	54	73.0%	0 (0.0%)	1 (1.3%)	1.3%	20 (26.7%)
<b>Gender (corr. applicant)</b>								
Female	35 (100.0%)	35 (100.0%)	25	71.4%	0 (0.0%)	0 (0.0%)	0.0%	10 (28.6%)
Male	39 (100.0%)	38 (97.4%)	28	73.7%	0 (0.0%)	1 (2.6%)	2.6%	10 (25.6%)
Non-binary	1 (100.0%)	1 (100.0%)	1	100.0%	0 (0.0%)	0 (0.0%)	0.0%	0 (0.0%)
<b>Research area</b>								
SSH	35 (100.0%)	35 (100.0%)	26	74.3%	0 (0.0%)	0 (0.0%)	0.0%	9 (25.7%)
MINT	26 (100.0%)	26 (100.0%)	19	73.1%	0 (0.0%)	0 (0.0%)	0.0%	7 (26.9%)
LS	14 (100.0%)	13 (92.9%)	9	69.2%	0 (0.0%)	1 (7.1%)	7.1%	4 (28.6%)

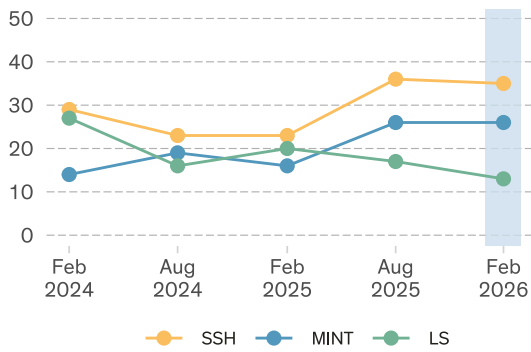
<sup>a</sup> Total = Number of submitted proposals minus external Lead Agency and withdrawal before rulings

<sup>b</sup> Evaluated = Total submissions minus formal and substantive non-considerations

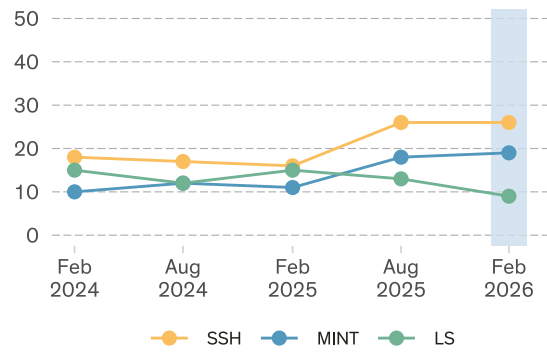
<sup>c</sup> NC = Non-considerations

<sup>1</sup>Calls: 'Rückkehr CH Postdoc.Mobility 2026 Februar'

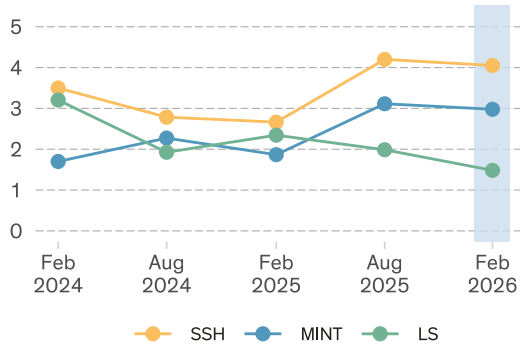
**Number of proposals**



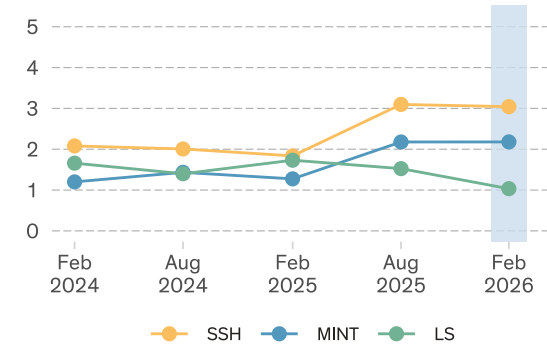
**Number of grants**



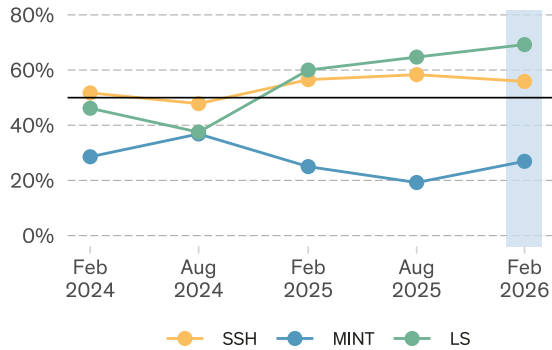
**Total requested amount (MCHF)**



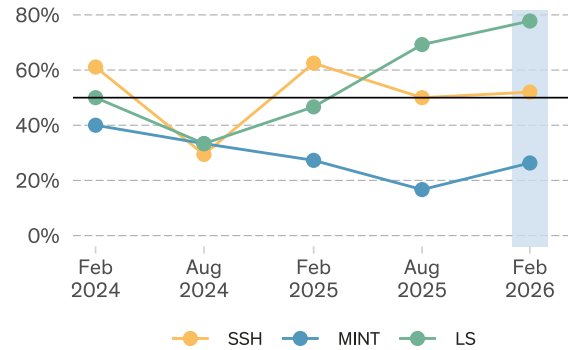
**Total granted amount (MCHF)**



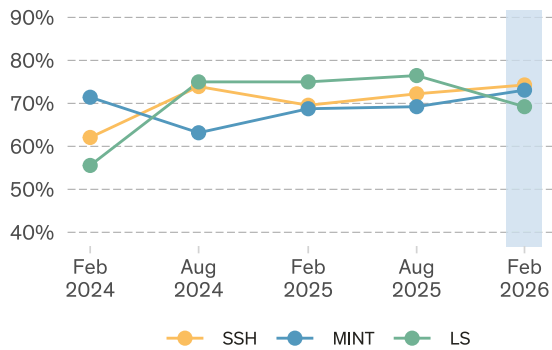
**Female corr. applicants**



**Female corr. grantees**



**Success rate**



**Funding rate**

